

# Recombinant Human $\alpha$ -Lactalbumin/LALBA Protein (His Tag)



Catalog Number:PKSH033250

**Note:** Centrifuge before opening to ensure complete recovery of vial contents.

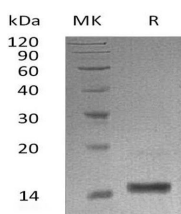
## Description

<b>Synonyms</b>	Lactose synthase B protein;Lysozyme-like protein 7;LALBA;LYZL7
<b>Species</b>	Human
<b>Expression Host</b>	HEK293 Cells
<b>Sequence</b>	Lys20-Leu142
<b>Accession</b>	P00709
<b>Calculated Molecular Weight</b>	15.1 kDa
<b>Observed molecular weight</b>	14-16 kDa
<b>Tag</b>	C-His

## Properties

<b>Purity</b>	> 95 % as determined by reducing SDS-PAGE.
<b>Endotoxin</b>	< 1.0 EU per $\mu$ g of the protein as determined by the LAL method.
<b>Storage</b>	Store at $-20^{\circ}\text{C}$ , stable for 6 months. Please minimize freeze-thaw cycles.
<b>Shipping</b>	This product is provided as liquid. It is shipped at frozen temperature with blue ice/gel packs. Upon receipt, store it immediately at $-20^{\circ}\text{C}$ .
<b>Formulation</b>	Supplied as a 0.2 $\mu$ m filtered solution of 20mM Tris-HCl, 150mM NaCl, pH 8.0.
<b>Reconstitution</b>	Not Applicable

## Data



> 95 % as determined by reducing SDS-PAGE.

## Background

Alpha-lactalbumin(LALBA) is a secreted protein that is a member of the glycosyl hydrolase 22 family.It is expressed in mammary gland in milk. It is the regulatory subunit of lactose synthase.It changes the substrate specificity of galactosyltransferase in the mammary gland making glucose a good acceptor substrate for this enzyme.

## For Research Use Only

A Reliable Research Partner in Life Science and Medicine

Toll-free: 1-888-852-8623

Web: [www.elabscience.com](http://www.elabscience.com)

Tel: 1-832-243-6086

Email: [techsupport@elabscience.com](mailto:techsupport@elabscience.com)

Fax: 1-832-243-6017