

Recombinant Human Alpha-Parvin/PARVA Protein (His Tag)



Catalog Number:PKSH033252

Note: Centrifuge before opening to ensure complete recovery of vial contents.

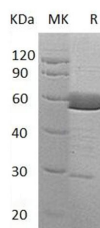
Description

Synonyms	Alpha-Parvin;Actopaxin;CH-ILKBP;Calponin-Like Integrin-Linked Kinase-Binding Protein;Matrix-Remodeling-Associated Protein 2;PARVA;MXRA2
Species	Human
Expression Host	E.coli
Sequence	Met 1-Glu372
Accession	Q9NVD7
Calculated Molecular Weight	43.2 kDa
Observed molecular weight	50-62 kDa
Tag	C-His

Properties

Purity	> 85 % as determined by reducing SDS-PAGE.
Endotoxin	< 1.0 EU per µg of the protein as determined by the LAL method.
Storage	Store at < -20°C, stable for 6 months. Please minimize freeze-thaw cycles.
Shipping	This product is provided as liquid. It is shipped at frozen temperature with blue ice/gel packs. Upon receipt, store it immediately at < - 20°C.
Formulation	Supplied as a 0.2 µm filtered solution of 50mM Tris, 150mM NaCl, 40% Glycerol, pH 7.4.
Reconstitution	Not Applicable

Data



> 85 % as determined by reducing SDS-PAGE.

Background

Alpha-Parvin (PARVA) is a member of the Parvin family. PARVA contains two CH (calponin-homology) domains. PARVA is widely expressed, with highest levels in heart, skeletal muscle, kidney and liver. PARVA interacts with integrin-linked protein kinase and probably with actin and the LD1 and LD4 motifs of PXN. PARVA may play a role in the regulation of cell adhesion and cytoskeleton organization. PARVA is also involved in ciliogenesis.

For Research Use Only

A Reliable Research Partner in Life Science and Medicine

Toll-free: 1-888-852-8623

Web: www.elabscience.com

Tel: 1-832-243-6086

Email: techsupport@elabscience.com

Fax: 1-832-243-6017