

Recombinant Human SNAP- α /NAPA Protein (His Tag)



Catalog Number:PKSH033253

Note: Centrifuge before opening to ensure complete recovery of vial contents.

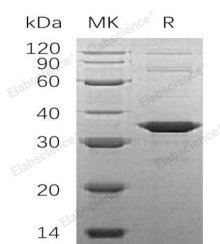
Description

Synonyms	Alpha-Soluble NSF Attachment Protein;SNAP-Alpha;N-Ethylmaleimide-Sensitive Factor Attachment Protein Alpha;NAPA;SNAPA
Species	Human
Expression Host	E.coli
Sequence	Met 1-Arg295
Accession	P54920
Calculated Molecular Weight	35.4 kDa
Observed molecular weight	35 kDa
Tag	N-His

Properties

Purity	> 95 % as determined by reducing SDS-PAGE.
Endotoxin	< 1.0 EU per μ g of the protein as determined by the LAL method.
Storage	Generally, lyophilized proteins are stable for up to 12 months when stored at -20 to -80°C. Reconstituted protein solution can be stored at 4-8°C for 2-7 days. Aliquots of reconstituted samples are stable at < -20°C for 3 months.
Shipping	This product is provided as lyophilized powder which is shipped with ice packs.
Formulation	Lyophilized from a 0.2 μ m filtered solution of 20mM Tris-HCl, 150mM NaCl, pH 8.0. Normally 5 % - 8 % trehalose, mannitol and 0.01% Tween80 are added as protectants before lyophilization. Please refer to the specific buffer information in the print
Reconstitution	Please refer to the printed manual for detailed information.

Data



> 95 % as determined by reducing SDS-PAGE.

Background

α -Soluble NSF Attachment Protein (SNAP- α) is a member of the SNAP (Soluble NSF Attachment Protein) family. SNAP- α interacts with PRKCABP and disrupts the interaction between GRIA2 and PRKCABP, leading to the internalization of GRIA2. SNAP- α is required for vesicular transport between the endoplasmic reticulum and the Golgi apparatus. SNAP- α is in charge of the binding of NSF and therefore the formation of a 20S fusion particle.

For Research Use Only

A Reliable Research Partner in Life Science and Medicine

Toll-free: 1-888-852-8623

Web: www.elabscience.com

Tel: 1-832-243-6086

Email: techsupport@elabscience.com

Fax: 1-832-243-6017