

Recombinant Human Alpha-Synuclein/SNCA Protein (His Tag)



Catalog Number:PKSH033254

Note: Centrifuge before opening to ensure complete recovery of vial contents.

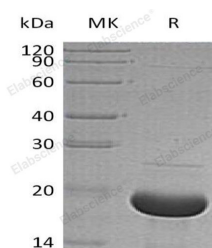
Description

Synonyms	Alpha-Synuclein;Non-A Beta Component of AD Amyloid;Non-A4 Component of Amyloid Precursor;NACP;SNCA;NACP;PARK1
Species	Human
Expression Host	E.coli
Sequence	Met 1-Ala140
Accession	P37840
Calculated Molecular Weight	16.7 kDa
Observed molecular weight	18 kDa
Tag	N-His

Properties

Purity	> 95 % as determined by reducing SDS-PAGE.
Endotoxin	< 1.0 EU per µg of the protein as determined by the LAL method.
Storage	Generally, lyophilized proteins are stable for up to 12 months when stored at -20 to -80°C. Reconstituted protein solution can be stored at 4-8°C for 2-7 days. Aliquots of reconstituted samples are stable at < -20°C for 3 months.
Shipping	This product is provided as lyophilized powder which is shipped with ice packs.
Formulation	Lyophilized from a 0.2 µm filtered solution of 20mM PB, 150mM NaCl, pH 7.4. Normally 5 % - 8 % trehalose, mannitol and 0.01 % Tween80 are added as protectants before lyophilization. Please refer to the specific buffer information in the printed man
Reconstitution	Please refer to the printed manual for detailed information.

Data



> 95 % as determined by reducing SDS-PAGE.

Background

Alpha-Synuclein (SNCA) is a member of the Synuclein family. SNCA is expressed principally in brain but also expressed in low concentrations in all tissues except liver. SNCA interacts with UCHL1; Phospholipase D and histones. SNCA can include beta- and gamma-synuclein. In addition; SNCA is an important regulatory component of vesicular transport in neuronal cells. It has been suggested that SNCA is related to the pathogenesis of Parkinson's Disease and neurodegenerative disorders. Defects in SNCA will lead to Dementia Lewy Body (DLB).

For Research Use Only

A Reliable Research Partner in Life Science and Medicine

Toll-free: 1-888-852-8623

Web: www.elabscience.com

Tel: 1-832-243-6086

Email: techsupport@elabscience.com

Fax: 1-832-243-6017