

Recombinant Human β -Actin/Beta Actin Protein (His Tag)



Catalog Number:PKSH033261

Note: Centrifuge before opening to ensure complete recovery of vial contents.

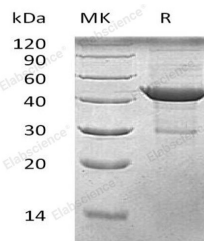
Description

Synonyms	Actin Cytoplasmic 1;Beta-Actin;ACTB
Species	Human
Expression Host	E.coli
Sequence	Asp2-Phe375
Accession	P60709
Calculated Molecular Weight	42.8 kDa
Observed molecular weight	43 kDa
Tag	C-His

Properties

Purity	> 90 % as determined by reducing SDS-PAGE.
Endotoxin	< 1.0 EU per μ g of the protein as determined by the LAL method.
Storage	Store at -20°C , stable for 6 months. Please minimize freeze-thaw cycles.
Shipping	This product is provided as liquid. It is shipped at frozen temperature with blue ice/gel packs. Upon receipt, store it immediately at -20°C .
Formulation	Supplied as a 0.2 μ m filtered solution of 10mM Tris-HCl, 0.1% TritonX-100, 2mM DTT, 10% Glycerol, pH 8.0.
Reconstitution	Not Applicable

Data



> 90 % as determined by reducing SDS-PAGE.

Background

Actins are ubiquitous globular and highly conserved proteins that are involved in various types of cell motility, structure, and integrity. Three main groups of actin isoforms, alpha, beta and gamma have been identified. The alpha actins are found in muscle tissues and are a major constituent of the contractile apparatus. The beta and gamma actins co-exist in most cell types as components of the cytoskeleton, and as mediators of internal cell motility. ACTB is a major constituent of the contractile apparatus and one of the two nonmuscle cytoskeletal actins. Polymerization of globular actin (G-actin) leads to a structural filament (F-actin) in the form of a two-stranded helix. Each actin can bind to 4 others.

For Research Use Only

A Reliable Research Partner in Life Science and Medicine

Toll-free: 1-888-852-8623

Web: www.elabscience.com

Tel: 1-832-243-6086

Email: techsupport@elabscience.com

Fax: 1-832-243-6017