

Recombinant Human LACTB2 Protein (GST Tag)

Catalog No. PKSH033268

Note: Centrifuge before opening to ensure complete recovery of vial contents.

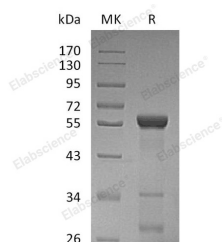
Description

Synonyms	Beta-Lactamase-Like Protein 2;LACTB2
Species	Human
Expression Host	E.coli
Sequence	Met 1-Leu288
Accession	Q53H82
Calculated Molecular Weight	59.2 kDa
Observed molecular weight	56 kDa
Tag	N-GST
Bioactivity	Not validated for activity

Properties

Purity	> 90 % as determined by reducing SDS-PAGE.
Endotoxin	< 1.0 EU per µg of the protein as determined by the LAL method.
Storage	Store at < -20°C, stable for 6 months. Please minimize freeze-thaw cycles.
Shipping	This product is provided as liquid. It is shipped at frozen temperature with blue ice/gel packs. Upon receipt, store it immediately at < -20°C.
Formulation	Supplied as a 0.2 µm filtered solution of PBS, 10% Glycerol, pH 7.5.
Reconstitution	Not Applicable

Data



> 90 % as determined by reducing SDS-PAGE.

Background

β-Lactamase-like Protein 2 (LACTB2) is a member of the metallo-beta-lactamase superfamily. LACTB2 also belongs to the Glyoxalase II family. LACTB2 is 288 amino acids long with 8 zinc-binding domains. The LACTB2 gene is expressed at high levels and annotates structural defects or features in 4 cDNA clones. LACTB2 proteins are expected to have hydrolase activity and metal ion-binding functions. LACTB2 protein is found to localize in mitochondrion. Other functions of LACTB2 is yet unknown.

For Research Use Only