

Recombinant Human LACTB2 Protein (GST Tag)

Catalog Number:PKSH033268



Note: Centrifuge before opening to ensure complete recovery of vial contents.

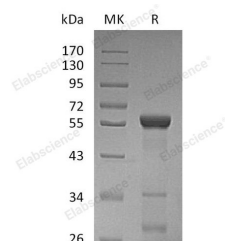
Description

Synonyms	Beta-Lactamase-Like Protein 2;LACTB2
Species	Human
Expression Host	E.coli
Sequence	Met 1-Leu288
Accession	Q53H82
Calculated Molecular Weight	59.2 kDa
Observed molecular weight	56 kDa
Tag	N-GST

Properties

Purity	> 90 % as determined by reducing SDS-PAGE.
Endotoxin	< 1.0 EU per μ g of the protein as determined by the LAL method.
Storage	Store at -20°C , stable for 6 months. Please minimize freeze-thaw cycles.
Shipping	This product is provided as liquid. It is shipped at frozen temperature with blue ice/gel packs. Upon receipt, store it immediately at -20°C .
Formulation	Supplied as a 0.2 μ m filtered solution of PBS, 10% Glycerol, pH 7.5.
Reconstitution	Not Applicable

Data



> 90 % as determined by reducing SDS-PAGE.

Background

β -Lactamase-like Protein 2 (LACTB2) is a member of the metallo-beta-lactamase superfamily. LACTB2 also belongs to the Glyoxalase II family. LACTB2 is 288 amino acids long with 8 zinc-binding domains. The LACTB2 gene is expressed at high levels and annotates structural defects or features in 4 cDNA clones. LACTB2 proteins are expected to have hydrolase activity and metal ion-binding functions. LACTB2 protein is found to localize in mitochondrion. Other functions of LACTB2 is yet unknown.

For Research Use Only

A Reliable Research Partner in Life Science and Medicine

Toll-free: 1-888-852-8623

Web: www.elabscience.com

Tel: 1-832-243-6086

Email: techsupport@elabscience.com

Fax: 1-832-243-6017