

Recombinant Human FBPase 1/FBP1 Protein (E. coli, His Tag)



Catalog Number:PKSH033276

Note: Centrifuge before opening to ensure complete recovery of vial contents.

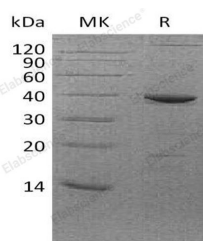
Description

Synonyms	Fructose-1;6-Bisphosphatase 1;FBPase 1;D-Fructose-1;6-Bisphosphate 1-Phosphohydrolase 1;FBP1;FBP
Species	Human
Expression Host	E.coli
Sequence	Ala2-Gln338
Accession	P09467
Calculated Molecular Weight	37.9 kDa
Observed molecular weight	38 kDa
Tag	C-His

Properties

Purity	> 95 % as determined by reducing SDS-PAGE.
Endotoxin	< 1.0 EU per µg of the protein as determined by the LAL method.
Storage	Store at < -20°C, stable for 6 months. Please minimize freeze-thaw cycles.
Shipping	This product is provided as liquid. It is shipped at frozen temperature with blue ice/gel packs. Upon receipt, store it immediately at < - 20°C.
Formulation	Supplied as a 0.2 µm filtered solution of 20mM Tris-HCl, 200mM NaCl, 1mM DTT, 1mM EDTA, 20% Glycerol, pH 8.0.
Reconstitution	Not Applicable

Data



> 95 % as determined by reducing SDS-PAGE.

Background

Fructose-1;6-Bisphosphatase 1 (FBPase 1) is a member of the FBPase class 1 family. FBPase 1 is a gluconeogenesis regulatory protein; which catalyzes the hydrolysis of fructose 1;6-bisphosphate to fructose 6-phosphate and inorganic phosphate. FBPase 1 can assume an active R-state; or an inactive T-state. FBPase 1 deficiency is inherited as an autosomal recessive disorder mainly in the liver and causes life-threatening episodes of hypoglycemia and metabolic acidosis in newborn infants or young children. FBPase 1 coupled with phosphofructokinase (PFK) is involved in the metabolism of pancreatic islet cells.

For Research Use Only

A Reliable Research Partner in Life Science and Medicine

Toll-free: 1-888-852-8623

Web: www.elabscience.com

Tel: 1-832-243-6086

Email: techsupport@elabscience.com

Fax: 1-832-243-6017