

Recombinant Rat IL-6/Interleukin-6 Protein

Catalog No. PKSR030420

Note: Centrifuge before opening to ensure complete recovery of vial contents.

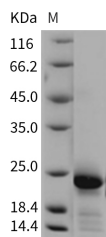
Description

Synonyms	IL6
Species	Rat
Expression Host	E.coli
Sequence	Phe25-Thr211
Accession	NP_036721.1
Calculated Molecular Weight	21.9 kDa
Observed molecular weight	22 kDa
Tag	None
Bioactivity	Measured in a cell proliferation assay using T1165 mouse plasmacytoma cells. The ED50 for this effect is typically 1-6 ng/ml.

Properties

Purity	> 90 % as determined by reducing SDS-PAGE.
Endotoxin	Please contact us for more information.
Storage	Generally, lyophilized proteins are stable for up to 12 months when stored at -20 to -80°C. Reconstituted protein solution can be stored at 4-8°C for 2-7 days. Aliquots of reconstituted samples are stable at < -20°C for 3 months.
Shipping	This product is provided as lyophilized powder which is shipped with ice packs.
Formulation	Lyophilized from sterile 40% acetonitrile, 0.1% TFA Normally 5 % - 8 % trehalose, mannitol and 0.01% Tween80 are added as protectants before lyophilization. Please refer to the specific buffer information in the printed manual.
Reconstitution	Please refer to the printed manual for detailed information.

Data



> 90 % as determined by reducing SDS-PAGE.

Background

Interleukin-6 (IL-6) is a multifunctional α -helical cytokine that regulates cell growth and differentiation of various tissues,

For Research Use Only

which is known particularly for its role in the immune response and acute phase reactions. IL-6 protein is secreted by a variety of cell types including T cells and macrophages as phosphorylated and variably glycosylated molecule. It exerts actions through its heterodimeric receptor composed of IL-6R that lacks the tyrosine/kinase domain and binds IL-6 with low affinity, and ubiquitously expressed glycoprotein 130 (gp130) that binds the IL-6. IL-6R complex with high affinity and thus transduces signals. IL-6 is also involved in hematopoiesis, bone metabolism, and cancer progression, and has been defined an essential role in directing transition from innate to acquired immunity.