

## Recombinant Rat SerpinF1/PEDF Protein (His Tag)

Catalog No. PKSR030156

**Note:** Centrifuge before opening to ensure complete recovery of vial contents.

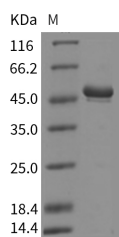
### Description

<b>Synonyms</b>	Dmrs91
<b>Species</b>	Rat
<b>Expression Host</b>	HEK293 Cells
<b>Sequence</b>	Met1-Thr418
<b>Accession</b>	NP_808788.1
<b>Calculated Molecular Weight</b>	45.9 kDa
<b>Tag</b>	C-His
<b>Bioactivity</b>	Not validated for activity

### Properties

<b>Purity</b>	> 90 % as determined by reducing SDS-PAGE.
<b>Endotoxin</b>	< 1.0 EU per µg of the protein as determined by the LAL method.
<b>Storage</b>	Generally, lyophilized proteins are stable for up to 12 months when stored at -20 to -80°C. Reconstituted protein solution can be stored at 4-8°C for 2-7 days. Aliquots of reconstituted samples are stable at < -20°C for 3 months.
<b>Shipping</b>	This product is provided as lyophilized powder which is shipped with ice packs.
<b>Formulation</b>	Lyophilized from sterile PBS, pH 7.4 Normally 5 % - 8 % trehalose, mannitol and 0.01% Tween80 are added as protectants before lyophilization. Please refer to the specific buffer information in the printed manual.
<b>Reconstitution</b>	Please refer to the printed manual for detailed information.

### Data



> 90 % as determined by reducing SDS-PAGE.

### Background

Pigment epithelium-derived factor, also known as PEDF, Serpin F1, and SERPINF1, is a multiple functional protein which has both anti-angiogenic activity and neurotrophic activity at the same time. PEDF is a secreted glycoprotein that belongs to the noninhibitory serpin. It has an alpha/beta core serine-protease inhibitor domain, three major beta-sheets,

### For Research Use Only

and ten alpha-helices. PEDF does not inhibit either serine or cysteine proteinases. PEDF exerts diverse physiological activities including anti-angiogenesis, anti-vasopermeability, anti-tumor, and neurotrophic activities. PEDF acts via multiple high affinity ligands and cell receptors. It has been described as a natural angiogenesis inhibitor with neurotrophic and immune-modulation properties. PEDF induces macrophages apoptosis and necrosis through the activation of peroxisome proliferator-activated receptor-gamma by which PEDF could modulate inflammatory reactions in septic shock. It balances angiogenesis in the eye and blocks tumor progression.

---

## For Research Use Only

Toll-free: 1-888-852-8623

Web: [www.elabscience.com](http://www.elabscience.com)

Tel: 1-832-243-6086

Email: [techsupport@elabscience.com](mailto:techsupport@elabscience.com)

Fax: 1-832-243-6017