

# Recombinant Rat JAM-B/CD322 Protein (Fc Tag)

Catalog Number:PKSR030197



**Note:** Centrifuge before opening to ensure complete recovery of vial contents.

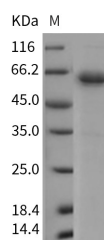
## Description

<b>Synonyms</b>	JAM2;JAM-2
<b>Species</b>	Rat
<b>Expression Host</b>	HEK293 Cells
<b>Sequence</b>	Met1-Asn236
<b>Accession</b>	Q3MHC0
<b>Calculated Molecular Weight</b>	50.3 kDa
<b>Observed molecular weight</b>	61 kDa
<b>Tag</b>	C-hFc

## Properties

<b>Purity</b>	> 90 % as determined by reducing SDS-PAGE.
<b>Endotoxin</b>	< 1.0 EU per µg of the protein as determined by the LAL method.
<b>Storage</b>	Generally, lyophilized proteins are stable for up to 12 months when stored at -20 to -80°C. Reconstituted protein solution can be stored at 4-8°C for 2-7 days. Aliquots of reconstituted samples are stable at < -20°C for 3 months.
<b>Shipping</b>	This product is provided as lyophilized powder which is shipped with ice packs.
<b>Formulation</b>	Lyophilized from sterile PBS, pH 7.4 Normally 5 % - 8 % trehalose, mannitol and 0.01 % Tween80 are added as protectants before lyophilization. Please refer to the specific buffer information in the printed manual.
<b>Reconstitution</b>	Please refer to the printed manual for detailed information.

## Data



> 90 % as determined by reducing SDS-PAGE.

## Background

Junctional adhesion molecule B (JAM-B), also known as Junctional adhesion molecule 2 (JAM2), Vascular endothelial junction-associated molecule (VE-JAM), and CD322, is a single-pass type I membrane protein which belongs to the immunoglobulin superfamily. It is prominently expressed on high endothelial venules. expression to be restricted to the high endothelial venule of tonsil and lymph nodes. The localization to the endothelium of arterioles in and around inflammatory and tumor foci. JAM-B can function as an adhesive ligand for the T cell line J45 and can interact with GM-CSF/IL-4-derived peripheral blood dendritic cells, circulating CD56(+) NK cells, circulating CD56(+)CD3(+) NK/T cells, and circulating CD56(+)CD3(+)CD8(+) cytolytic T cells. JAM-2 is expressed on high endothelial venules (HEVs) in human tonsil and on a subset of human leukocytes, suggesting that JAM-2 plays a central role in the regulation of

## For Research Use Only

A Reliable Research Partner in Life Science and Medicine

Toll-free: 1-888-852-8623

Web: [www.elabscience.com](http://www.elabscience.com)

Tel: 1-832-243-6086

Email: [techsupport@elabscience.com](mailto:techsupport@elabscience.com)

Fax: 1-832-243-6017

# Recombinant Rat JAM-B/CD322 Protein (Fc Tag)

Catalog Number:PKSR030197



transendothelial migration. It binds to very late activation antigen (VLA)-4, a leucocyte integrin that contributes to rolling and firm adhesion of lymphocytes to endothelial cells through binding to vascular cell adhesion molecule (VCAM)-1. JAM-B appears to contribute to leucocyte extravasation by facilitating not only transmigration but also rolling and adhesion. JAM-B acts as an adhesive ligand for interacting with a variety of immune cell types and may play a role in lymphocyte homing to secondary lymphoid organs.

---

## For Research Use Only

A Reliable Research Partner in Life Science and Medicine

Toll-free: 1-888-852-8623

Tel: 1-832-243-6086

Fax: 1-832-243-6017

Web: [www.elabscience.com](http://www.elabscience.com)

Email: [techsupport@elabscience.com](mailto:techsupport@elabscience.com)