

Recombinant Human/Mouse/Rat BMP-2 Protein

Catalog Number:PKSR030454



Note: Centrifuge before opening to ensure complete recovery of vial contents.

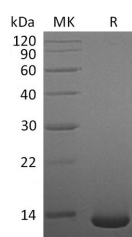
Description

Synonyms	Bone Morphogenetic Protein 2;BMP-2;Bone Morphogenetic Protein 2A;BMP-2A;BMP2;BMP2A
Species	Human/Mouse/Rat
Expression Host	E.coli
Sequence	Gln283-Arg396
Accession	P12643
Calculated Molecular Weight	13.8 kDa
Observed molecular weight	14 kDa
Tag	C-His
Bioactivity	Measure by its ability to induce alkaline phosphatase production by ATDC5 cells. The ED ₅₀ for this effect is < 1.0 µg/mL.

Properties

Purity	> 95 % as determined by reducing SDS-PAGE.
Endotoxin	< 0.1 EU per µg of the protein as determined by the LAL method.
Storage	Generally, lyophilized proteins are stable for up to 12 months when stored at -20 to -80°C. Reconstituted protein solution can be stored at 4-8°C for 2-7 days. Aliquots of reconstituted samples are stable at < -20°C for 3 months.
Shipping	This product is provided as lyophilized powder which is shipped with ice packs.
Formulation	Lyophilized from sterile 20 mM sodium citrate, 0.2 M NaCl, pH 3.5. Normally 5 % - 8 % trehalose, mannitol and 0.01% Tween80 are added as protectants before lyophilization. Please refer to the specific buffer information in the printed manual.
Reconstitution	Please refer to the printed manual for detailed information.

Data



> 95 % as determined by reducing SDS-PAGE.

Background

Bone Morphogenetic Protein-2 (BMP-2) is one of the bone-growth regulatory factors that belong to the transforming growth factor-beta (TGF-beta) superfamily of proteins. BMPs are synthesized as large precursor molecules, which are cleaved by proteolytic enzymes. The active form of BMP-2 can consist of a dimer of two identical proteins or a heterodimer of two related bone morphogenetic proteins.

For Research Use Only

A Reliable Research Partner in Life Science and Medicine

Toll-free: 1-888-852-8623

Web: www.elabscience.com

Tel: 1-832-243-6086

Email: techsupport@elabscience.com

Fax: 1-832-243-6017