

Recombinant Mouse EphA3 Protein (Fc Tag)

Catalog No. PKSM040346

Note: Centrifuge before opening to ensure complete recovery of vial contents.

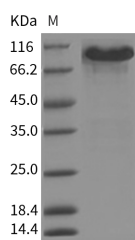
Description

Synonyms	AW492086;Cek4;End3;ETK1;Hek;Hek4;Mek4;Tyr04
Species	Mouse
Expression Host	HEK293 Cells
Sequence	Met1-His541
Accession	NP_034270.1
Calculated Molecular Weight	85.7 kDa
Observed molecular weight	96 kDa
Tag	C-hFc
Bioactivity	Immobilized mouse EFNA5-His at 10 µg/ml (100 µl/well) can bind mouse EPHA3-Fc, The EC50 of rat mouse EPHA3-Fc is 12.3-28.9 ng/ml.

Properties

Purity	> 90 % as determined by reducing SDS-PAGE.
Endotoxin	< 1.0 EU per µg of the protein as determined by the LAL method.
Storage	Generally, lyophilized proteins are stable for up to 12 months when stored at -20 to -80°C. Reconstituted protein solution can be stored at 4-8°C for 2-7 days. Aliquots of reconstituted samples are stable at < -20°C for 3 months.
Shipping	This product is provided as lyophilized powder which is shipped with ice packs.
Formulation	Lyophilized from sterile PBS, pH 7.4 Normally 5 % - 8 % trehalose, mannitol and 0.01% Tween80 are added as protectants before lyophilization. Please refer to the specific buffer information in the printed manual.
Reconstitution	Please refer to the printed manual for detailed information.

Data



> 90 % as determined by reducing SDS-PAGE.

Background

EPHA3 gene belongs to the ephrin receptor subfamily of the protein-tyrosine kinase family. EPH and EPH-related

For Research Use Only

receptors have been implicated in mediating developmental events, particularly in the nervous system. The ephrin receptors are divided into 2 groups based on the similarity of their extracellular domain sequences and their affinities for binding ephrin-A and ephrin-B ligands. EPHA3 gene encodes a protein that binds ephrin-A ligands. EPHA3 is involved in the retinotectal mapping of neurons. It may also control the segregation but not the guidance of motor and sensory axons during neuromuscular circuit development.