

Recombinant Mouse Cadherin-6/CDH6 Protein (His Tag)



Catalog Number:PKSM040405

Note: Centrifuge before opening to ensure complete recovery of vial contents.

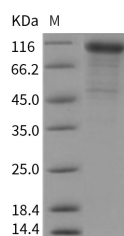
Description

Synonyms	cad6;cadherin-6;K-cadherin
Species	Mouse
Expression Host	HEK293 Cells
Sequence	Met1-Ala615
Accession	P97326
Calculated Molecular Weight	68.7 kDa
Observed molecular weight	98 kDa
Tag	C-His

Properties

Purity	> 90 % as determined by reducing SDS-PAGE.
Endotoxin	< 1.0 EU per µg of the protein as determined by the LAL method.
Storage	Generally, lyophilized proteins are stable for up to 12 months when stored at -20 to -80°C. Reconstituted protein solution can be stored at 4-8°C for 2-7 days. Aliquots of reconstituted samples are stable at < -20°C for 3 months.
Shipping	This product is provided as lyophilized powder which is shipped with ice packs.
Formulation	Lyophilized from sterile PBS, pH 7.4 Normally 5 % - 8 % trehalose, mannitol and 0.01 % Tween80 are added as protectants before lyophilization. Please refer to the specific buffer information in the printed manual.
Reconstitution	Please refer to the printed manual for detailed information.

Data



> 90 % as determined by reducing SDS-PAGE.

Background

Cadherins are a family of calcium-dependent, cell-cell adhesion molecules that play an important morphoregulatory role in a wide variety of tissues. Alterations in cadherin function have been implicated in tumor progression in a number of adenocarcinomas. Cadherin-6 (CDH6), also known as K-cadherin (KCAD), is a type-II classic cadherin cell-cell adhesion molecules, which are expressed in graded or areal patterns, as well as layer-specific patterns, in the cortical plate. Human Cadherin-6 is synthesized as a 790 aa type I transmembrane glycoprotein that contains a 18 aa signal peptide, a 35 aa propeptide, a 562 aa extracellular region, a 21 aa transmembrane segment, and a 154 aa cytoplasmic domain. There are five cadherin domains of approximately 110 aa each in the extracellular region. Cadherin-6 is highly expressed in brain, cerebellum, and kidney, and may contribute to the formation of the segmental structure of the early brain, as well as the

For Research Use Only

A Reliable Research Partner in Life Science and Medicine

Toll-free: 1-888-852-8623

Web: www.elabscience.com

Tel: 1-832-243-6086

Email: techsupport@elabscience.com

Fax: 1-832-243-6017

Recombinant Mouse Cadherin-6/CDH6 Protein (His Tag)

Catalog Number:PKSM040405



development of renal proximal tubules. Weak expression is also detected lung, pancreas, and gastric mucosa. Additionally, it is specifically expressed in the proximal tubule of normal kidneys and in renal cell cancer. Thus , Cadherin-6 is a new prognostic factor for renal cancer.

For Research Use Only

A Reliable Research Partner in Life Science and Medicine

Toll-free: 1-888-852-8623

Tel: 1-832-243-6086

Fax: 1-832-243-6017

Web: www.elabscience.com

Email: techsupport@elabscience.com