

Recombinant Mouse FCRL1 Protein (aa 1-204, His Tag)

Catalog No. PKSM040425

Note: Centrifuge before opening to ensure complete recovery of vial contents.

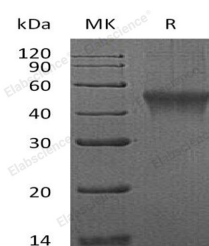
Description

| | |
|------------------------------------|--|
| Synonyms | Fc receptor-like protein 1;FcR-like protein 1;FcRL1;BXMAS1-like protein 1;mBXMH1;Fc receptor homolog 1;FcRH1;moFcRH1;IFGP family protein 1;mIFGP1;CD307a;Bxmas1;Bxmh1;Bxmh1b;Fcrh1;Fcrh1l;Fcrh1s;Ifgp1 Protein |
| Species | Mouse |
| Expression Host | HEK293 Cells |
| Sequence | Met1-Thr204 |
| Accession | Q8R4Y0-2 |
| Calculated Molecular Weight | 21.6 kDa |
| Tag | C-His |
| Bioactivity | Not validated for activity |

Properties

| | |
|-----------------------|---|
| Purity | > 95 % as determined by reducing SDS-PAGE. |
| Endotoxin | < 1.0 EU per µg of the protein as determined by the LAL method. |
| Storage | Generally, lyophilized proteins are stable for up to 12 months when stored at -20 to -80°C. Reconstituted protein solution can be stored at 4-8°C for 2-7 days. Aliquots of reconstituted samples are stable at < -20°C for 3 months. |
| Shipping | This product is provided as lyophilized powder which is shipped with ice packs. |
| Formulation | Lyophilized from sterile PBS, pH 7.4 Normally 5 % - 8 % trehalose, mannitol and 0.01% Tween80 are added as protectants before lyophilization. Please refer to the specific buffer information in the printed manual. |
| Reconstitution | Please refer to the printed manual for detailed information. |

Data



> 95 % as determined by reducing SDS-PAGE.

Background

Fc receptor-like protein 1, also known as FcR-like protein 1, Fc receptor homolog 1, IFGP family protein 1, Immune

For Research Use Only

receptor translocation-associated protein 5 and FCRL1, is a single-pass type I membrane protein which contains three Ig-like C2-type (immunoglobulin-like) domains. It is a cell-surface membrane protein belonging to FCRL family and is preferentially expressed on B cells. FCRL1 is primarily expressed in secondary lymphoid tissues by mature subsets of B cells. It is detected in spleen, lymph node, heart, skeletal muscle, kidney, liver and placenta. FCRL1 is specifically expressed by mature B lineage cells with higher expression in naive versus memory B cells (at protein level). Human Fc receptor-like molecules (FCRL1, FCRL2, FCRL3, FCRL4, FCRL5) have tyrosine-based immunoregulatory potential and are expressed by B-lineage subpopulations. FCRL1 may function as an activating coreceptor in B cells. It may also function in B cells activation and differentiation.