

# Recombinant Mouse CSNK2A1/CK2A1 Protein

Catalog Number:PKSM040468



**Note:** Centrifuge before opening to ensure complete recovery of vial contents.

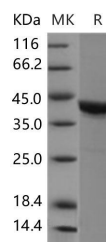
## Description

<b>Synonyms</b>	Csnk2a1-rs4
<b>Species</b>	Mouse
<b>Expression Host</b>	Baculovirus-Insect Cells
<b>Sequence</b>	Met1-Gln391
<b>Accession</b>	Q60737
<b>Calculated Molecular Weight</b>	45.3 kDa
<b>Observed molecular weight</b>	40 kDa
<b>Tag</b>	None
<b>Bioactivity</b>	Kinase activity untested

## Properties

<b>Purity</b>	> 95 % as determined by reducing SDS-PAGE.
<b>Endotoxin</b>	< 1.0 EU per µg of the protein as determined by the LAL method.
<b>Storage</b>	Generally, lyophilized proteins are stable for up to 12 months when stored at -20 to -80°C. Reconstituted protein solution can be stored at 4-8°C for 2-7 days. Aliquots of reconstituted samples are stable at < -20°C for 3 months.
<b>Shipping</b>	This product is provided as lyophilized powder which is shipped with ice packs.
<b>Formulation</b>	Lyophilized from sterile 20mM Tris, 500mM NaCl, 10% glycerol, pH 7.4 Normally 5 % - 8 % trehalose, mannitol and 0.01% Tween80 are added as protectants before lyophilization. Please refer to the specific buffer information in the printed manual.
<b>Reconstitution</b>	Please refer to the printed manual for detailed information.

## Data



> 95 % as determined by reducing SDS-PAGE.

## Background

Casein kinase II subunit alpha, also known as CK II alpha, CSNK2A1 and CK2A1, is a member of the protein kinase superfamily, Ser / Thr protein kinase family and CK2 subfamily. Casein kinase II (CSNK2A1) is a serine / threonine protein kinase that phosphorylates acidic proteins such as casein. This kinase is composed of an alpha, an alpha-prime, and two beta subunits. The alpha subunits contain the catalytic activity while the beta subunits undergo autophosphorylation. Casein kinase II (CSNK2A1) is a constitutively active, ubiquitously expressed serine / threonine protein kinase that is thought to have a regulatory function in cell proliferation, cell differentiation and apoptosis. CSNK2A1 functions as a tetrameric complex consisting of two regulatory beta-subunits and two catalytic units (alpha and

## For Research Use Only

A Reliable Research Partner in Life Science and Medicine

Toll-free: 1-888-852-8623

Web: [www.elabscience.com](http://www.elabscience.com)

Tel: 1-832-243-6086

Email: [techsupport@elabscience.com](mailto:techsupport@elabscience.com)

Fax: 1-832-243-6017

# Recombinant Mouse CSNK2A1/CK2A1 Protein

Catalog Number:PKSM040468



alpha') in a homomeric or heteromeric conformation. Whilst the alpha- and alpha'-subunits are catalytically identical, proteins that regulate CSNK2A1, such as cdc2 and Hsp90, preferentially bind to the alpha and not the alpha'-subunit. CSNK2A1 can phosphorylate a number of key intracellular signaling proteins implicated in tumor suppression (p53 and PTEN) and tumorigenesis (myc, jun, NF-kappaB). CSNK2A1 is also thought to influence Wnt signaling via beta-catenin phosphorylation and the PI 3-K signaling pathway via th phosphorylation of Akt.

---

## For Research Use Only

A Reliable Research Partner in Life Science and Medicine

Toll-free: 1-888-852-8623

Web: [www.elabscience.com](http://www.elabscience.com)

Tel: 1-832-243-6086

Email: [techsupport@elabscience.com](mailto:techsupport@elabscience.com)

Fax: 1-832-243-6017