

Recombinant Mouse SPARCL1/SPARC-like 1 Protein (His Tag)

Catalog No. PKSM040621

Note: Centrifuge before opening to ensure complete recovery of vial contents.

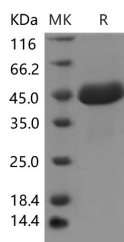
Description

Synonyms	Ecm2;hevin;mast9;Sc1
Species	Mouse
Expression Host	HEK293 Cells
Sequence	Tyr368-Phe650
Accession	NP_034227.3
Calculated Molecular Weight	34.8 kDa
Tag	N-His
Bioactivity	Not validated for activity

Properties

Purity	> 90 % as determined by reducing SDS-PAGE.
Endotoxin	< 1.0 EU per µg of the protein as determined by the LAL method.
Storage	Generally, lyophilized proteins are stable for up to 12 months when stored at -20 to -80°C. Reconstituted protein solution can be stored at 4-8°C for 2-7 days. Aliquots of reconstituted samples are stable at < -20°C for 3 months.
Shipping	This product is provided as lyophilized powder which is shipped with ice packs.
Formulation	Lyophilized from sterile PBS, pH 7.4 Normally 5 % - 8 % trehalose, mannitol and 0.01% Tween80 are added as protectants before lyophilization. Please refer to the specific buffer information in the printed manual.
Reconstitution	Please refer to the printed manual for detailed information.

Data



> 90 % as determined by reducing SDS-PAGE.

Background

SPARC-like protein 1 (SPARCL1; also known as SC1, high endothelial venule protein, or hevin) is an extracellular matrix-associated, secreted glycoprotein belonging to the secreted protein acidic and rich in cysteine (SPARC) family of matricellular proteins. It contains three conserved structural domains that are implicated in the regulation of cell adhesion,

For Research Use Only

migration, and proliferation. SPARCL1 is expressed during embryogenesis and tissue remodeling and is especially prominent in brain and vasculature. Its down-regulation in a number of cancers and the possibility of its functional compensation by SPARC has led to recent interest in hevin as a tumor suppressor and regulator of angiogenesis. SPARCL1 has antiadhesive properties, and loss of SPARCL1 expression is associated with increased proliferative activity and cell cycle progression. It is suggested that it may influence multiple cellular processes during distinct stages of brain development and function. In addition, SPARCL1 can influence the function of astroglial cells in the developing and mature central nervous system (CNS).