

# Recombinant Mouse METAP2 Protein (His Tag)

Catalog Number:PKSM040634



**Note:** Centrifuge before opening to ensure complete recovery of vial contents.

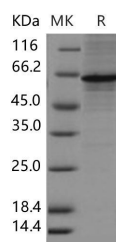
## Description

<b>Synonyms</b>	4930584B20Rik;A930035J23Rik;AI047573;AL024412;Amp2;AU014659;Mnpep;p67;p67eIF2
<b>Species</b>	Mouse
<b>Expression Host</b>	Baculovirus-Insect Cells
<b>Sequence</b>	Ala 2-Tyr 478
<b>Accession</b>	O08663
<b>Calculated Molecular Weight</b>	54.3 kDa
<b>Observed molecular weight</b>	60 kDa
<b>Tag</b>	C-His
<b>Bioactivity</b>	Measured by its ability to remove methionine from a fluorogenic peptide substrate H-Met-Gly-Pro-AMC (Catalog # ES017). The resulting GP-AMC is cleaved by Recombinant Human DPPIV/CD26 (Catalog # 1180-SE). The specific activity is > 15 pmol/min/μg

## Properties

<b>Purity</b>	> 88 % as determined by reducing SDS-PAGE.
<b>Endotoxin</b>	< 1.0 EU per μg of the protein as determined by the LAL method.
<b>Storage</b>	Generally, lyophilized proteins are stable for up to 12 months when stored at -20 to -80°C. Reconstituted protein solution can be stored at 4-8°C for 2-7 days. Aliquots of reconstituted samples are stable at < -20°C for 3 months.
<b>Shipping</b>	This product is provided as lyophilized powder which is shipped with ice packs.
<b>Formulation</b>	Lyophilized from sterile 50mM Tris, 100mM NaCl, pH 8.0, 10% glycerol Normally 5 % - 8 % trehalose, mannitol and 0.01% Tween80 are added as protectants before lyophilization. Please refer to the specific buffer information in the printed manual.
<b>Reconstitution</b>	Please refer to the printed manual for detailed information.

## Data



> 88 % as determined by reducing SDS-PAGE.

## Background

METAP2 (Methionine aminopeptidase 2), also known as MAP2 is a protein which belongs to the peptidase M24A family. MAP2 binds 2 cobalt or manganese ions and contains approximately 12 O-linked N-acetylglucosamine (GlcNAc) residues. It is found in all organisms and is especially important because of its critical role in tissue repair and protein

## For Research Use Only

A Reliable Research Partner in Life Science and Medicine

Toll-free: 1-888-852-8623

Web: [www.elabscience.com](http://www.elabscience.com)

Tel: 1-832-243-6086

Email: [techsupport@elabscience.com](mailto:techsupport@elabscience.com)

Fax: 1-832-243-6017

# Recombinant Mouse METAP2 Protein (His Tag)

Catalog Number:PKSM040634



degradation. The catalytic activity of human MAP2 toward Met-Val peptides is consistently two orders of magnitude higher than that of METAP1, suggesting that it is responsible for processing proteins containing N-terminal Met-Val and Met-Thr sequences in vivo. This protein functions both by protecting the alpha subunit of eukaryotic initiation factor 2 from inhibitory phosphorylation and by removing the amino-terminal methionine residue from nascent protein. MAP2 protects eukaryotic initiation factor EIF2S1 from translation-inhibiting phosphorylation by inhibitory kinases such as EIF2AK2/PKR and EIF2AK1/HCR. It also plays a critical role in the regulation of protein synthesis.

---

## For Research Use Only

A Reliable Research Partner in Life Science and Medicine

Toll-free: 1-888-852-8623

Tel: 1-832-243-6086

Fax: 1-832-243-6017

Web: [www.elabscience.com](http://www.elabscience.com)

Email: [techsupport@elabscience.com](mailto:techsupport@elabscience.com)