

Recombinant Mouse CADM4/IGSF4C/TSLL2 Protein (His Tag)



Catalog Number: PKSM040646

Note: Centrifuge before opening to ensure complete recovery of vial contents.

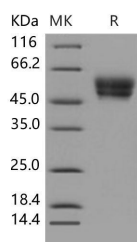
Description

Synonyms	Igdf4c;Igsf4c;Tsl12
Species	Mouse
Expression Host	HEK293 Cells
Sequence	Met 1-Ala 324
Accession	NP_694752.1
Calculated Molecular Weight	34.5 kDa
Observed molecular weight	50-60 kDa
Tag	C-His

Properties

Purity	> 97 % as determined by reducing SDS-PAGE.
Endotoxin	< 1.0 EU per µg of the protein as determined by the LAL method.
Storage	Generally, lyophilized proteins are stable for up to 12 months when stored at -20 to -80°C. Reconstituted protein solution can be stored at 4-8°C for 2-7 days. Aliquots of reconstituted samples are stable at < -20°C for 3 months.
Shipping	This product is provided as lyophilized powder which is shipped with ice packs.
Formulation	Lyophilized from sterile PBS, pH 7.4 Normally 5 % - 8 % trehalose, mannitol and 0.01 % Tween80 are added as protectants before lyophilization. Please refer to the specific buffer information in the printed manual.
Reconstitution	Please refer to the printed manual for detailed information.

Data



> 97 % as determined by reducing SDS-PAGE.

Background

Immunoglobulin superfamily member 4C (IGSF4C), also known as CADM4 or NECL-4, is an immunoglobulin (Ig) superfamily molecule showing significant homology with a lung tumor suppressor, TSLC1. CADM4/IGSF4C/NECL-4 protein is mainly expressed in the kidney, bladder, and prostate in addition to the brain. Experiments have reported the biological significance of CADM4/IGSF4C/NECL-4 in the urinary tissues. An immunohistochemical study reveals that CADM4 is expressed at the cell-cell attachment sites in the renal tubules, the transitional epithelia of the bladder, and the glandular epithelia of the prostate. IGSF4-immunoreactivity (IR) was observed diffusely in the telencephalic wall, whereas it became rather confined to the subplate, the cortical plate and the subventricular zone as the development proceeded. IGSF4-IR gradually decreased after birth and disappeared in adulthood. IGSF4 remained at low levels

For Research Use Only

A Reliable Research Partner in Life Science and Medicine

Toll-free: 1-888-852-8623

Web: www.elabscience.com

Tel: 1-832-243-6086

Email: techsupport@elabscience.com

Fax: 1-832-243-6017

Recombinant Mouse CADM4/IGSF4C/TSLL2 Protein (His Tag)



Catalog Number: PKSM040646

throughout embryonic stage, whereas it increased after birth. These spatiotemporal patterns of the expression suggest that IGSF4 plays crucial roles in the development of both telencephalon and cerebellum. CADM4/IGSF4C/NECL-4 is ectopically expressed in adult T-cell leukemia (ATL) cells, providing not only a diagnostic marker for ATL, but also a possible therapeutic target against its invasion. The distinct roles of CADM4/IGSF4C/NECL-4 in the oncogenesis of carcinomas and ATL could be due to tissue-specific differences in the downstream cascades, and is a novel concept with respect to cell adhesion in human oncogenesis.

For Research Use Only

A Reliable Research Partner in Life Science and Medicine

Toll-free: 1-888-852-8623

Tel: 1-832-243-6086

Fax: 1-832-243-6017

Web: www.elabscience.com

Email: techsupport@elabscience.com