

Recombinant Mouse Carboxypeptidase A1/CPA1 Protein (His Tag)



Catalog Number:PKSM040678

Note: Centrifuge before opening to ensure complete recovery of vial contents.

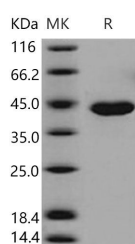
Description

Synonyms	0910001L12Rik;Cpa
Species	Mouse
Expression Host	HEK293 Cells
Sequence	Met 1-Tyr 419
Accession	NP_079626.2
Calculated Molecular Weight	47.0 kDa
Observed molecular weight	42 kDa
Tag	C-His
Bioactivity	Measured by its ability to cleave the colorimetric peptide substrate Ac-Phe-Thiaphe-OH in the presence of 5, 5'Dithiobis (2-nitrobenzoic acid) (DTNB). The specific activity is > 6, 000 pmoles/min/μg.

Properties

Purity	> 96 % as determined by reducing SDS-PAGE.
Endotoxin	< 1.0 EU per μg of the protein as determined by the LAL method.
Storage	Generally, lyophilized proteins are stable for up to 12 months when stored at -20 to -80°C. Reconstituted protein solution can be stored at 4-8°C for 2-7 days. Aliquots of reconstituted samples are stable at < -20°C for 3 months.
Shipping	This product is provided as lyophilized powder which is shipped with ice packs.
Formulation	Lyophilized from sterile 20mM Tris, 150mM NaCl, pH 7.5 Normally 5 % - 8 % trehalose, mannitol and 0.01% Tween80 are added as protectants before lyophilization. Please refer to the specific buffer information in the printed manual.
Reconstitution	Please refer to the printed manual for detailed information.

Data



> 96 % as determined by reducing SDS-PAGE.

Background

Carboxypeptidase A1 (CPA1) is secreted as a pancreatic procarboxypeptidase, and cleaves the C-terminal amide or ester bond of peptides that have a free C-terminal carboxyl group, with the preference of residues with aromatic or branched aliphatic side chains. CPA1 comprises a signal peptide, a pro region and a mature chain, and can be activated after cleavage of the pro peptide. In contrast to procarboxypeptidase B which was always secreted by the pancreas as a monomer, procarboxypeptidase A occurs as a monomer and/or associated to one or two functionally different proteins,

For Research Use Only

A Reliable Research Partner in Life Science and Medicine

Toll-free: 1-888-852-8623

Web: www.elabscience.com

Tel: 1-832-243-6086

Email: techsupport@elabscience.com

Fax: 1-832-243-6017

Recombinant Mouse Carboxypeptidase A1/CPA1 Protein (His Tag)



Catalog Number:PKSM040678

such as zymogen E, and is involved in zymogen inhibition. Three different forms of human pancreatic procarboxypeptidase A have been isolated.

For Research Use Only

A Reliable Research Partner in Life Science and Medicine

Toll-free: 1-888-852-8623

Web: www.elabscience.com

Tel: 1-832-243-6086

Email: techsupport@elabscience.com

Fax: 1-832-243-6017