

Recombinant Mouse SLAMF6/Ly108 Protein (His Tag)

Catalog Number:PKSM040764



Note: Centrifuge before opening to ensure complete recovery of vial contents.

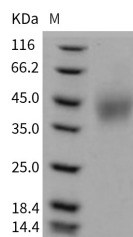
Description

Synonyms	KAL1;KAL1b;Ly108;NTB-A;NTBA;SF2000
Species	Mouse
Expression Host	HEK293 Cells
Sequence	Met 1-Asn 239
Accession	NP_109635.1
Calculated Molecular Weight	24.4 kD
Observed molecular weight	40-45 kDa
Tag	C-His
Bioactivity	Measured by its ability to bind biotinylated recombinant human SH2D1A in a functional ELISA.

Properties

Purity	> 95 % as determined by reducing SDS-PAGE.
Endotoxin	< 1.0 EU per µg of the protein as determined by the LAL method.
Storage	Generally, lyophilized proteins are stable for up to 12 months when stored at -20 to -80°C. Reconstituted protein solution can be stored at 4-8°C for 2-7 days. Aliquots of reconstituted samples are stable at < -20°C for 3 months.
Shipping	This product is provided as lyophilized powder which is shipped with ice packs.
Formulation	Lyophilized from sterile PBS, pH 7.4 Normally 5 % - 8 % trehalose, mannitol and 0.01% Tween80 are added as protectants before lyophilization. Please refer to the specific buffer information in the printed manual.
Reconstitution	Please refer to the printed manual for detailed information.

Data



> 95 % as determined by reducing SDS-PAGE.

Background

SLAM family member 6, also known as Activating NK receptor, NK-T-B-antigen, NTB-A, SLAMF6, KALI and Ly108, is a single-pass type I membrane protein which belongs to the CD2 subfamily of the immunoglobulin superfamily. SLAMF6 / Ly108 contains one Ig-like (immunoglobulin-like) domain. It is expressed by all (resting and activated) natural killer cells (NK), T- and B-lymphocytes. SLAMF6 / Ly108 triggers cytolytic activity only in natural killer cells (NK) expressing high surface densities of natural cytotoxicity receptors. SLAMF6 / Ly108 is a homodimer. It interacts with PTN6 and, upon phosphorylation, with PTN11 and SH2D1A/SAP. SLAMF6 / Ly108 undergoes tyrosine phosphorylation

For Research Use Only

A Reliable Research Partner in Life Science and Medicine

Toll-free: 1-888-852-8623

Web: www.elabscience.com

Tel: 1-832-243-6086

Email: techsupport@elabscience.com

Fax: 1-832-243-6017

Recombinant Mouse SLAMF6/Ly108 Protein (His Tag)

Catalog Number:PKSM040764



and associates with the Src homology 2 domain-containing protein (SH2D1A) as well as with SH2 domain-containing phosphatases (SHPs). It may function as a coreceptor in the process of NK cell activation. SLAMF6 / Ly108 can also mediate inhibitory signals in NK cells from X-linked lymphoproliferative patients.

For Research Use Only

A Reliable Research Partner in Life Science and Medicine

Toll-free: 1-888-852-8623

Tel: 1-832-243-6086

Fax: 1-832-243-6017

Web: www.elabscience.com

Email: techsupport@elabscience.com