

Recombinant Mouse sFRP1 Protein (His tag)

Catalog Number:PKSM040898



Note: Centrifuge before opening to ensure complete recovery of vial contents.

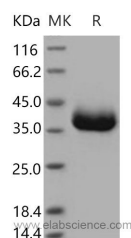
Description

Synonyms	2210415K03Rik;AW011917;AW107218;AW742929;sFRP-1
Species	Mouse
Expression Host	HEK293 Cells
Sequence	Met 1-Lys 314
Accession	NP_038862.2
Calculated Molecular Weight	34 kDa
Observed molecular weight	38 kDa
Tag	C-His

Properties

Purity	> 93 % as determined by SDS-PAGE
Endotoxin	< 1.0 EU per µg of the protein as determined by the LAL method.
Storage	Samples are stable for up to twelve months from date of receipt at -70°C. Store it under sterile conditions at -20°C to -80°C. It is recommended that the protein be aliquoted for optimal storage. Avoid repeated freeze-thaw cycles.
Shipping	In general, recombinant proteins are provided as lyophilized powder which are shipped at ambient temperature. Bulk packages of recombinant proteins are provided as frozen liquid. They are shipped out with blue ice unless customers require otherwise.
Formulation	Lyophilized from sterile PBS, pH 7.4
Reconstitution	Please refer to the printed manual for detailed information.

Data



Background

Secreted frizzled-related protein 1, also known as sFRP1, is a 35 kDa prototypical member of the SFRP family. SFRP family consists of five secreted glycoproteins in humans acting as extracellular signaling ligands. Each is approximately 300 amino acids in length and contains a cysteine-rich domain (CRD) that shares 30-50% sequence homology with the CRD of Frizzled (Fz) receptors, a putative signal sequence, and a conserved hydrophilic carboxy-terminal domain. SFRPs act as soluble modulators of Wnt signaling, counteracting Wnt-induced effects at high concentrations and promoting them at lower concentrations. SFRPs are able to bind Wnt proteins and Fz receptors in the extracellular compartment. The interaction between SFRPs and Wnt proteins prevents the latter from binding the Fz receptors. The Wnt pathway plays a key role in embryonic development, cell differentiation and cell proliferation. The deregulation of this critical

For Research Use Only

A Reliable Research Partner in Life Science and Medicine

Toll-free: 1-888-852-8623

Web: www.elabscience.com

Tel: 1-832-243-6086

Email: techsupport@elabscience.com

Fax: 1-832-243-6017

Recombinant Mouse sFRP1 Protein (His tag)

Catalog Number:PKSM040898



developmental pathway occurs in several human tumor entities. Mouse sFRP1 is highly expressed in kidney and embryonic heart, as well as in the eye, where it is principally localized to the ciliary body and the lens epithelium.

For Research Use Only

A Reliable Research Partner in Life Science and Medicine

Toll-free: 1-888-852-8623

Tel: 1-832-243-6086

Fax: 1-832-243-6017

Web: www.elabscience.com

Email: techsupport@elabscience.com