

# Recombinant Mouse ENPEP/Aminopeptidase A Protein (His Tag)



Catalog Number:PKSM040935

**Note:** Centrifuge before opening to ensure complete recovery of vial contents.

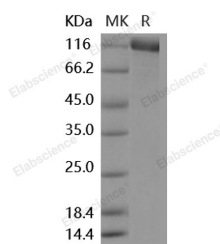
## Description

<b>Synonyms</b>	6030431M22Rik;APA;Bp-1/6C3;ENPEP;Ly-51;Ly51
<b>Species</b>	Mouse
<b>Expression Host</b>	Baculovirus-Insect Cells
<b>Sequence</b>	Arg41-Pro945
<b>Accession</b>	P16406
<b>Calculated Molecular Weight</b>	106 kDa
<b>Observed molecular weight</b>	113 kDa
<b>Tag</b>	N-His
<b>Bioactivity</b>	Measured by its ability to cleave the fluorogenic peptide substrate, Glu-7-amido-4-methyl coumarin. The specific activity is > 200 pmoles/min/μg.

## Properties

<b>Purity</b>	> 91 % as determined by reducing SDS-PAGE.
<b>Endotoxin</b>	< 1.0 EU per μg of the protein as determined by the LAL method.
<b>Storage</b>	Generally, lyophilized proteins are stable for up to 12 months when stored at -20 to -80°C. Reconstituted protein solution can be stored at 4-8°C for 2-7 days. Aliquots of reconstituted samples are stable at < -20°C for 3 months.
<b>Shipping</b>	This product is provided as lyophilized powder which is shipped with ice packs.
<b>Formulation</b>	Lyophilized from sterile 20mM Tris, 500mM NaCl, pH 7.4 Normally 5 % - 8 % trehalose, mannitol and 0.01% Tween80 are added as protectants before lyophilization. Please refer to the specific buffer information in the printed manual.
<b>Reconstitution</b>	Please refer to the printed manual for detailed information.

## Data



> 91 % as determined by reducing SDS-PAGE.

## Background

ENPEP, also known as aminopeptidase A, is a member of the peptidase M1 family. Members of this family are involved in response to cadmium ion and proteolysis. They located in 6 components and are expressed in 26 plant structures. ENPEP is expressed by epithelial cells of the proximal tubule cells and the glomerulus of the nephron. It also can be detected in a variety of other tissues. ENPEP probably plays a role in regulating growth and differentiation of early B-lineage cells. It also may play a role in the catabolic pathway of the renin-angiotensin system. ENPEP is a zinc-dependent membrane-bound aminopeptidase that catalyzes the cleavage of glutamic and aspartic amino acid residues from the N-

## For Research Use Only

A Reliable Research Partner in Life Science and Medicine

Toll-free: 1-888-852-8623

Web: [www.elabscience.com](http://www.elabscience.com)

Tel: 1-832-243-6086

Email: [techsupport@elabscience.com](mailto:techsupport@elabscience.com)

Fax: 1-832-243-6017

# Recombinant Mouse ENPEP/Aminopeptidase A Protein (His Tag)



Catalog Number: PKSM040935

---

terminus of polypeptides. It degrades vasoconstricting angiotensin II into angiotensin III and therefore helps to regulate blood pressure.

---

## For Research Use Only

A Reliable Research Partner in Life Science and Medicine

Toll-free: 1-888-852-8623

Web: [www.elabscience.com](http://www.elabscience.com)

Tel: 1-832-243-6086

Email: [techsupport@elabscience.com](mailto:techsupport@elabscience.com)

Fax: 1-832-243-6017