

Recombinant Mouse CCL21a Protein

Catalog Number:PKSM040980



Note: Centrifuge before opening to ensure complete recovery of vial contents.

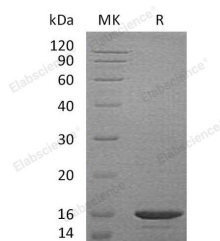
Description

Synonyms	C-C Motif Chemokine 21a;6Ckine;Beta-Chemokine Exodus-2;Small-Inducible Cytokine A21a;Thymus-Derived Chemotactic Agent 4;TCA4;Ccl21a;Scya21;Scya21a
Species	Mouse
Expression Host	E.coli
Sequence	Ser24-Gly133
Accession	P84444
Calculated Molecular Weight	12.0 kDa
Observed molecular weight	16 kDa
Tag	None

Properties

Purity	> 95 % as determined by reducing SDS-PAGE.
Endotoxin	< 1.0 EU per µg of the protein as determined by the LAL method.
Storage	Generally, lyophilized proteins are stable for up to 12 months when stored at -20 to -80°C. Reconstituted protein solution can be stored at 4-8°C for 2-7 days. Aliquots of reconstituted samples are stable at < -20°C for 3 months.
Shipping	This product is provided as lyophilized powder which is shipped with ice packs.
Formulation	Lyophilized from a 0.2 µm filtered solution of PBS, pH 7.4. Normally 5 % - 8 % trehalose, mannitol and 0.01% Tween80 are added as protectants before lyophilization. Please refer to the specific buffer information in the printed manual.
Reconstitution	Please refer to the printed manual for detailed information.

Data



> 95 % as determined by reducing SDS-PAGE.

Background

C-C Motif Chemokine 21a (CCL21a) is a small secreted cytokine that belongs to the intercrine beta (CC chemokine) family. Mouse CCL21 cDNA encodes a 133 amino acid residue protein with a 23 residue signal peptide that is cleaved to generate the 110 residue mature protein. Mouse CCL21 has three forms while CCL21a has Ser-65. CCL21 elicits its effects by binding to a cell surface chemokine receptor known as CCR7 and CXCR3. Mouse CCL21 inhibits hemopoiesis and stimulates chemotaxis. It has chemotactic function in vitro for thymocytes and activated T-cells, but not for B-cells, macrophages, or neutrophils. Mouse CCL21 shows preferential activity towards naive T-cells and may play a role in

For Research Use Only

A Reliable Research Partner in Life Science and Medicine

Toll-free: 1-888-852-8623

Web: www.elabscience.com

Tel: 1-832-243-6086

Email: techsupport@elabscience.com

Fax: 1-832-243-6017

Recombinant Mouse CCL21a Protein

Catalog Number:PKSM040980



mediating homing of lymphocytes to secondary lymphoid organs.

For Research Use Only

A Reliable Research Partner in Life Science and Medicine

Toll-free: 1-888-852-8623

Web: www.elabscience.com

Tel: 1-832-243-6086

Email: techsupport@elabscience.com

Fax: 1-832-243-6017