

# Recombinant Mouse CCL24/Eotaxin-2 Protein

Catalog Number:PKSM040981



**Note:** Centrifuge before opening to ensure complete recovery of vial contents.

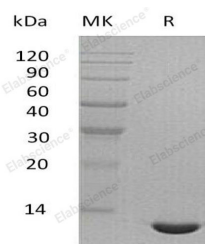
## Description

<b>Synonyms</b>	C-C motif chemokine 24;Ccl24;Eosinophil chemotactic protein 2;Eotaxin-2;Small-inducible cytokine A24;Scya24
<b>Species</b>	Mouse
<b>Expression Host</b>	E.coli
<b>Sequence</b>	Val27-Val119
<b>Accession</b>	Q9JKC0
<b>Calculated Molecular Weight</b>	10.3 kDa
<b>Observed molecular weight</b>	12 kDa
<b>Tag</b>	None

## Properties

<b>Purity</b>	> 95 % as determined by reducing SDS-PAGE.
<b>Endotoxin</b>	< 1.0 EU per µg of the protein as determined by the LAL method.
<b>Storage</b>	Generally, lyophilized proteins are stable for up to 12 months when stored at -20 to -80°C. Reconstituted protein solution can be stored at 4-8°C for 2-7 days. Aliquots of reconstituted samples are stable at < -20°C for 3 months.
<b>Shipping</b>	This product is provided as lyophilized powder which is shipped with ice packs.
<b>Formulation</b>	Lyophilized from a 0.2 µm filtered solution of PBS, pH 7.4. Normally 5 % - 8 % trehalose, mannitol and 0.01% Tween80 are added as protectants before lyophilization. Please refer to the specific buffer information in the printed manual.
<b>Reconstitution</b>	Please refer to the printed manual for detailed information.

## Data



> 95 % as determined by reducing SDS-PAGE.

## Background

Mouse CCL24 is a secreted protein, which is a member of the CC chemokine subfamily. Mouse Ccl24 cDNA encodes a 119 amino acid residue precursor protein, shares approximately 58% amino acid sequence identity with human Ccl24. It is predominantly expressed in the jejunum and spleen and also be induced in the lung by allergen challenge and IL4. Mouse ccl24 has lower chemotactic activity for neutrophils but none for monocytes and activated lymphocytes. Ccl24 is chemotactic for resting T-lymphocytes, eosinophils and can bind to CCR3. LPS and IL4 also differentially regulate the expression of Ccl24 in monocytes and macrophages.

## For Research Use Only

A Reliable Research Partner in Life Science and Medicine

Toll-free: 1-888-852-8623

Web: [www.elabscience.com](http://www.elabscience.com)

Tel: 1-832-243-6086

Email: [techsupport@elabscience.com](mailto:techsupport@elabscience.com)

Fax: 1-832-243-6017