

Recombinant Mouse CCL3 Protein (His Tag)

Catalog Number:PKSM040982



Note: Centrifuge before opening to ensure complete recovery of vial contents.

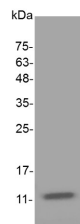
Description

Synonyms	C-C motif chemokine 3;Heparin-binding chemotaxis protein;Macrophage inflammatory protein 1-alpha;MIP1-a;chemokine (C-C motif) ligand 3;LD78a;LD78 alpha;MIP-1 alpha;Scya3
Species	Mouse
Expression Host	E.coli
Sequence	Ala24-Ala92
Accession	P10855
Calculated Molecular Weight	8.7 kDa
Observed molecular weight	11 kDa
Tag	N-His
Bioactivity	Measure by its ability to chemoattract human PBMCs using a concentration range of 10.0 - 100.0 ng/mL. Note: Results may vary from different PBMC donors.

Properties

Purity	> 98 % as determined by reducing SDS-PAGE.
Endotoxin	< 0.1 EU per µg of the protein as determined by the LAL method.
Storage	Generally, lyophilized proteins are stable for up to 12 months when stored at -20 to -80°C. Reconstituted protein solution can be stored at 4-8°C for 2-7 days. Aliquots of reconstituted samples are stable at < -20°C for 3 months.
Shipping	This product is provided as lyophilized powder which is shipped with ice packs.
Formulation	Lyophilized from sterile PBS, pH 7.4. Normally 5 % - 8 % trehalose, mannitol and 0.01 % Tween80 are added as protectants before lyophilization. Please refer to the specific buffer information in the printed manual.
Reconstitution	Please refer to the printed manual for detailed information.

Data



> 98 % as determined by reducing SDS-PAGE.

Background

C-C Motif Chemokine 3 (MIP-1 alpha,CCL3) is a member of the beta or CC subfamily of chemokines and is closely related to CCL4/MIP-1 beta. CCL3 expression can be induced in a variety of hematopoietic cells, fibroblasts, smooth muscle cells, and epithelial cells. Mature mouse CCL3 shares 73%, 91%, and 82% amino acid sequence identity with human, rat, and cotton rat CCL3, respectively. CCL3 exerts its biological functions through interactions with CCR1,

For Research Use Only

A Reliable Research Partner in Life Science and Medicine

Toll-free: 1-888-852-8623

Web: www.elabscience.com

Tel: 1-832-243-6086

Email: techsupport@elabscience.com

Fax: 1-832-243-6017

Recombinant Mouse CCL3 Protein (His Tag)

Catalog Number:PKSM040982



CCR3, and CCR5. It is cleared from the extracellular space by internalization via the decoy chemokine receptor D6. CCL3 promotes the chemoattraction, adhesion to activated vascular endothelium, and cellular activation of many hematopoietic cell types including activated T cells, NK cells, neutrophils, monocytes, immature dendritic cells, and eosinophils. CCL3 is also known as stem cell inhibitor (SCI) and can inhibit the proliferation of hematopoietic progenitor cells. CCL3 bioactivity contributes to tumor metastasis and the inflammatory components of viral infection, rheumatoid arthritis, and hepatitis, although it also can suppress the replication of HIV.

For Research Use Only

A Reliable Research Partner in Life Science and Medicine

Toll-free: 1-888-852-8623

Tel: 1-832-243-6086

Fax: 1-832-243-6017

Web: www.elabscience.com

Email: techsupport@elabscience.com