

Recombinant Mouse CX3CL1/Fractalkine Protein (His Tag)

Catalog Number:PKSM040991

Note: Centrifuge before opening to ensure complete recovery of vial contents.

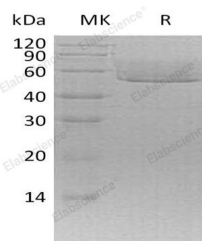
Description

Synonyms	Fractalkine;C-X3-C motif chemokine 1;CX3C membrane-anchored chemokine;Neurotactin;Small-inducible cytokine D1;Cx3c;Fkn;Scyd1;CXC3;CXC3C;ABCD-3;SCYD1;C3Xkine;NTN;NTT
Species	Mouse
Expression Host	HEK293 Cells
Sequence	Gln25-Arg337
Accession	O35188
Calculated Molecular Weight	34.3 kDa
Observed molecular weight	50-65 kDa
Tag	C-His

Properties

Purity	> 95 % as determined by reducing SDS-PAGE.
Endotoxin	< 1.0 EU per µg of the protein as determined by the LAL method.
Storage	Generally, lyophilized proteins are stable for up to 12 months when stored at -20 to -80°C. Reconstituted protein solution can be stored at 4-8°C for 2-7 days. Aliquots of reconstituted samples are stable at < -20°C for 3 months.
Shipping	This product is provided as lyophilized powder which is shipped with ice packs.
Formulation	Lyophilized from a 0.2 µm filtered solution of 20mM PB,150mM NaCl,pH7.4. Normally 5 % - 8 % trehalose, mannitol and 0.01% Tween80 are added as protectants before lyophilization. Please refer to the specific buffer information in the printed manual
Reconstitution	Please refer to the printed manual for detailed information.

Data



> 95 % as determined by reducing SDS-PAGE.

Background

Fractalkine(CX3CL1) is a single-pass type I membrane protein and belongs to the intercrine delta family. It consists of an extracellular NH₂-terminal domain, a mucin-like stalk, a transmembrane α helix, and a short cytoplasmic tail. CX3CL1 exists in two forms: as a membrane-anchored or as a shed 80-95K glycoprotein. Soluble CX3CL1 is generated by limited proteolysis on the cell surface, and a disintegrin and metallopeptidase 10 (ADAM10) and ADAM17/tumor necrosis factor- α -converting enzyme (ADAM17/TACE) participate in this shedding. It has been suggested that ADAM10 acts in the constitutive shedding, and ADAM17 acts in response to cell activation. The protein may play a role in regulating

For Research Use Only

A Reliable Research Partner in Life Science and Medicine

Toll-free: 1-888-852-8623

Web: www.elabscience.com

Tel: 1-832-243-6086

Email: techsupport@elabscience.com

Fax: 1-832-243-6017

Recombinant Mouse CX3CL1/Fractalkine Protein (His Tag)^{dg}

Catalog Number:PKSM040991



leukocyte adhesion and migration processes at the endothelium.

For Research Use Only

A Reliable Research Partner in Life Science and Medicine

Toll-free: 1-888-852-8623

Tel: 1-832-243-6086

Fax: 1-832-243-6017

Web: www.elabscience.com

Email: techsupport@elabscience.com