

Recombinant Mouse CTLA4 Protein (Flag Tag)

Catalog Number:PKSM041000



Note: Centrifuge before opening to ensure complete recovery of vial contents.

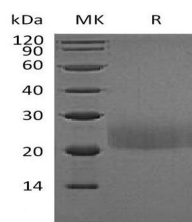
Description

| | |
|------------------------------------|---|
| Synonyms | Cytotoxic T-lymphocyte protein 4;Cytotoxic T-lymphocyte-associated antigen 4;CTLA-4;CD152;Ctla4 |
| Species | Mouse |
| Expression Host | HEK293 Cells |
| Sequence | Ala37-Asp161 |
| Accession | P09793 |
| Calculated Molecular Weight | 14.7 kDa |
| Observed molecular weight | 20-25 kDa |
| Tag | C-Flag |

Properties

| | |
|-----------------------|--|
| Purity | > 95 % as determined by reducing SDS-PAGE. |
| Endotoxin | < 1.0 EU per µg of the protein as determined by the LAL method. |
| Storage | Generally, lyophilized proteins are stable for up to 12 months when stored at -20 to -80°C. Reconstituted protein solution can be stored at 4-8°C for 2-7 days. Aliquots of reconstituted samples are stable at < -20°C for 3 months. |
| Shipping | This product is provided as lyophilized powder which is shipped with ice packs. |
| Formulation | Lyophilized from a 0.2 µm filtered solution of PBS, pH 7.4. Normally 5 % - 8 % trehalose, mannitol and 0.01 % Tween80 are added as protectants before lyophilization. Please refer to the specific buffer information in the printed manual. |
| Reconstitution | Please refer to the printed manual for detailed information. |

Data



> 95 % as determined by reducing SDS-PAGE.

Background

Mouse Cytotoxic Tlymphocyte 4(CTLA-4,CD152), is a type I transmembrane T cell inhibitory molecule. Within the ECD, Mouse CTLA-4 shares 68% aa sequence identity with human. CTLA4 is similar to the T cell costimulatory protein CD28 since both of the molecules bind to CD80 and CD86 on antigen-presenting cells. CTLA4 transmits an inhibitory signal to T cells, whereas CD28 transmits a stimulatory signal. Intracellular CTLA4 is also found in regulatory T cells and may play an important role in their functions. T cell activation through the T cell receptor and CD28 leads to increased expression of CTLA4. Genetic variations of CTLA4 have been associated with susceptibility to systemic lupus erythematosus(SLE), Gravesdisease(GRD), Celiac disease type3(CELIAC3) and Hepatitis B virus

For Research Use Only

A Reliable Research Partner in Life Science and Medicine

Toll-free: 1-888-852-8623

Web: www.elabscience.com

Tel: 1-832-243-6086

Email: techsupport@elabscience.com

Fax: 1-832-243-6017

Recombinant Mouse CTLA4 Protein (Flag Tag)

Catalog Number:PKSM041000



infection(HBVinfection).

For Research Use Only

A Reliable Research Partner in Life Science and Medicine

Toll-free: 1-888-852-8623

Tel: 1-832-243-6086

Fax: 1-832-243-6017

Web: www.elabscience.com

Email: techsupport@elabscience.com