

Recombinant Mouse CTLA4 Protein (Fc Tag)

Catalog No. PKSM041002

Note: Centrifuge before opening to ensure complete recovery of vial contents.

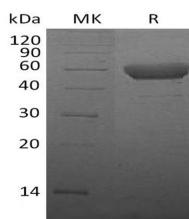
Description

Synonyms	Cytotoxic T-lymphocyte protein 4;Cytotoxic T-lymphocyte-associated antigen 4;CTLA-4;CD152;Ctla4
Species	Mouse
Expression Host	HEK293 Cells
Sequence	Ala37-Asp161
Accession	P09793
Calculated Molecular Weight	40.4 kDa
Observed molecular weight	50-60 kDa
Tag	C-Fc
Bioactivity	Loaded Human B7-2-His on HIS1K Biosensor, can bind Mouse CTLA-4-Fc with an affinity constant of 5.65 nM as determined in BLI assay.

Properties

Purity	> 95 % as determined by reducing SDS-PAGE.
Endotoxin	< 1.0 EU per µg of the protein as determined by the LAL method.
Storage	Generally, lyophilized proteins are stable for up to 12 months when stored at -20 to -80°C. Reconstituted protein solution can be stored at 4-8°C for 2-7 days. Aliquots of reconstituted samples are stable at < -20°C for 3 months.
Shipping	This product is provided as lyophilized powder which is shipped with ice packs.
Formulation	Lyophilized from a 0.2 µm filtered solution of PBS, pH 7.4. Normally 5 % - 8 % trehalose, mannitol and 0.01% Tween80 are added as protectants before lyophilization. Please refer to the specific buffer information in the printed manual.
Reconstitution	Please refer to the printed manual for detailed information.

Data



> 95 % as determined by reducing SDS-PAGE.

Background

For Research Use Only

Mouse Cytotoxic T lymphocyte 4 (CTLA-4, CD152), is a type I transmembrane T cell inhibitory molecule. Within the ECD, Mouse CTLA-4 shares 68% aa sequence identity with human. CTLA4 is similar to the T cell costimulatory protein CD28 since both of the molecules bind to CD80 and CD86 on antigen-presenting cells. CTLA4 transmits an inhibitory signal to T cells, whereas CD28 transmits a stimulatory signal. Intracellular CTLA4 is also found in regulatory T cells and may play an important role in their functions. T cell activation through the T cell receptor and CD28 leads to increased expression of CTLA4. Genetic variations of CTLA4 have been associated with susceptibility to systemic lupus erythematosus (SLE), Graves disease (GRD), Celiac disease type 3 (CELIAC3) and Hepatitis B virus infection (HBV infection).