

Recombinant Mouse Ephrin-A4/EFNA4 Protein (Fc Tag)

Catalog Number:PKSM041009



Note: Centrifuge before opening to ensure complete recovery of vial contents.

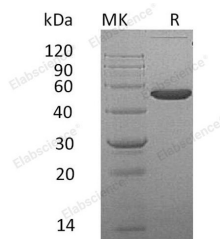
Description

| | |
|------------------------------------|--|
| Synonyms | Ephrin-A4;EPH-related receptor tyrosine kinase ligand 4;Epl4;Eplg4;Lerk4 |
| Species | Mouse |
| Expression Host | HEK293 Cells |
| Sequence | Arg27-Gly176 |
| Accession | O08542 |
| Calculated Molecular Weight | 44.0 kDa |
| Observed molecular weight | 53 kDa |
| Tag | C-Fc |

Properties

| | |
|-----------------------|---|
| Purity | > 95 % as determined by reducing SDS-PAGE. |
| Endotoxin | < 1.0 EU per µg of the protein as determined by the LAL method. |
| Storage | Generally, lyophilized proteins are stable for up to 12 months when stored at -20 to -80°C. Reconstituted protein solution can be stored at 4-8°C for 2-7 days. Aliquots of reconstituted samples are stable at < -20°C for 3 months. |
| Shipping | This product is provided as lyophilized powder which is shipped with ice packs. |
| Formulation | Lyophilized from a 0.2 µm filtered solution of PBS, pH 7.4. Normally 5 % - 8 % trehalose, mannitol and 0.01% Tween80 are added as protectants before lyophilization. Please refer to the specific buffer information in the printed manual. |
| Reconstitution | Please refer to the printed manual for detailed information. |

Data



> 95 % as determined by reducing SDS-PAGE.

Background

Ephrin-A4 belongs to the ephrin family and Contains 1 ephrin RBD (ephrin receptor-binding) domain. The protein is cell surface GPI-bound ligand for Eph receptors, a family of receptor tyrosine kinases which are crucial for migration, repulsion and adhesion during neuronal, vascular and epithelial development. Ephrin-A4 binds promiscuously Eph receptors residing on adjacent cells, leading to contact-dependent bidirectional signaling into neighboring cells. It may play a role in the interaction between activated B-lymphocytes and dendritic cells in tonsils.

For Research Use Only

A Reliable Research Partner in Life Science and Medicine

Toll-free: 1-888-852-8623

Web: www.elabscience.com

Tel: 1-832-243-6086

Email: techsupport@elabscience.com

Fax: 1-832-243-6017