

Recombinant Mouse Ephrin-B2/EFNB2 Protein (Fc & His Tag)



Catalog Number: PKSM041012

Note: Centrifuge before opening to ensure complete recovery of vial contents.

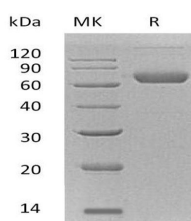
Description

Synonyms	Ephrin-B2; ELF-2; EPH-related receptor tyrosine kinase ligand 5; HTK ligand; Elf2; Epl5; Eplg5; Htkl; Lerk5.
Species	Mouse
Expression Host	HEK293 Cells
Sequence	Arg29-Glu227
Accession	P52800
Calculated Molecular Weight	49.6 kDa
Observed molecular weight	65-80 kDa
Tag	C-Fc-His

Properties

Purity	> 95 % as determined by reducing SDS-PAGE.
Endotoxin	< 1.0 EU per µg of the protein as determined by the LAL method.
Storage	Generally, lyophilized proteins are stable for up to 12 months when stored at -20 to -80°C. Reconstituted protein solution can be stored at 4-8°C for 2-7 days. Aliquots of reconstituted samples are stable at < -20°C for 3 months.
Shipping	This product is provided as lyophilized powder which is shipped with ice packs.
Formulation	Lyophilized from a 0.2 µm filtered solution of 20mM PB, 150mM NaCl, pH 7.4. Normally 5 % - 8 % trehalose, mannitol and 0.01 % Tween80 are added as protectants before lyophilization. Please refer to the specific buffer information in the printed manual
Reconstitution	Please refer to the printed manual for detailed information.

Data



> 95 % as determined by reducing SDS-PAGE.

Background

Ephrin-B2 is a single-pass type I membrane protein and it contains 1 ephrin RBD (ephrin receptor-binding) domain. Ephrin-B2 belongs to the ephrin (EPH) family and it is cell surface transmembrane ligand for Eph receptors, a family of receptor tyrosine kinases which are crucial for migration, repulsion and adhesion during neuronal, vascular and epithelial development. The ephrins and EPH-related receptors contain the largest subfamily of receptor protein-tyrosine kinases and have been associated with mediating developmental events, particularly in the nervous system and in erythropoiesis. Based upon their structures and sequence relationships, ephrins are allocated into the ephrin-A (EFNA) class, which are anchored to the membrane by a glycosylphosphatidylinositol linkage, and the ephrin-B (EFNB) class, which are

For Research Use Only

A Reliable Research Partner in Life Science and Medicine

Toll-free: 1-888-852-8623

Web: www.elabscience.com

Tel: 1-832-243-6086

Email: techsupport@elabscience.com

Fax: 1-832-243-6017

Recombinant Mouse Ephrin-B2/EFNB2 Protein (Fc & His Tag)



Catalog Number: PKSM041012

transmembrane proteins. It also binds to receptor tyrosine kinase including EPHA4, EPHA3 and EPHB4 and together with EPHB4 plays a central role in heart morphogenesis and angiogenesis through regulation of cell adhesion and cell migration.

For Research Use Only

A Reliable Research Partner in Life Science and Medicine

Toll-free: 1-888-852-8623

Web: www.elabscience.com

Tel: 1-832-243-6086

Email: techsupport@elabscience.com

Fax: 1-832-243-6017