

Recombinant Mouse GH1/Growth Hormone Protein

Catalog No. PKSM041038

Note: Centrifuge before opening to ensure complete recovery of vial contents.

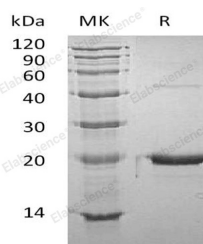
Description

Synonyms	Somatotropin;Growth Hormone;Gh1;Gh
Species	Mouse
Expression Host	E.coli
Sequence	Phe27-Phe216
Accession	P06880
Calculated Molecular Weight	21.9 kDa
Observed molecular weight	20 kDa
Tag	None
Bioactivity	Not validated for activity

Properties

Purity	> 95 % as determined by reducing SDS-PAGE.
Endotoxin	< 1.0 EU per µg of the protein as determined by the LAL method.
Storage	Generally, lyophilized proteins are stable for up to 12 months when stored at -20 to -80°C. Reconstituted protein solution can be stored at 4-8°C for 2-7 days. Aliquots of reconstituted samples are stable at < -20°C for 3 months.
Shipping	This product is provided as lyophilized powder which is shipped with ice packs.
Formulation	Lyophilized from a 0.2 µm filtered solution of 20mM HEPES, 4% Sucrose, 4% Mannitol, 0.02% Tween 80, pH 8.0. Normally 5% - 8% trehalose, mannitol and 0.01% Tween 80 are added as protectants before lyophilization. Please refer to the specific buffer information in the printed manual.
Reconstitution	Please refer to the printed manual for detailed information.

Data



> 95 % as determined by reducing SDS-PAGE.

Background

Somatotropin(GH) is a member of the somatotropin/prolactin family of hormones which play an important role in growth

For Research Use Only

control. Its major role in stimulating body growth is to stimulate the liver and other tissues to secrete IGF-1. GH stimulates both the differentiation and proliferation of myoblasts. It also stimulates amino acid uptake and protein synthesis in muscle and other tissues.