

# Recombinant Mouse Interleukin-17F/IL-17F Protein (His Tag)



Catalog Number: PKSM041076

**Note:** Centrifuge before opening to ensure complete recovery of vial contents.

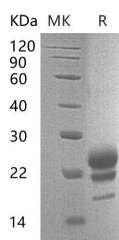
## Description

<b>Synonyms</b>	Interleukin-17F;IL-17F;Cytokine ML-1;Interleukin-24;IL-24;IL17F;IL24
<b>Species</b>	Mouse
<b>Expression Host</b>	HEK293 Cells
<b>Sequence</b>	Arg29-Ala161
<b>Accession</b>	Q7TNI7
<b>Calculated Molecular Weight</b>	15.9 kDa
<b>Observed molecular weight</b>	17-23 kDa
<b>Tag</b>	C-His

## Properties

<b>Purity</b>	> 95 % as determined by reducing SDS-PAGE.
<b>Endotoxin</b>	< 1.0 EU per µg of the protein as determined by the LAL method.
<b>Storage</b>	Generally, lyophilized proteins are stable for up to 12 months when stored at -20 to -80°C. Reconstituted protein solution can be stored at 4-8°C for 2-7 days. Aliquots of reconstituted samples are stable at < -20°C for 3 months.
<b>Shipping</b>	This product is provided as lyophilized powder which is shipped with ice packs.
<b>Formulation</b>	Lyophilized from a 0.2 µm filtered solution of PBS, pH 7.4. Normally 5 % - 8 % trehalose, mannitol and 0.01% Tween80 are added as protectants before lyophilization. Please refer to the specific buffer information in the printed manual.
<b>Reconstitution</b>	Please refer to the printed manual for detailed information.

## Data



> 95 % as determined by reducing SDS-PAGE.

## Background

Interleukin-17F (IL-17F) exists in a disulfide-linked heterodimer that belongs to the IL-17 family. IL-17F is expressed in activated, but not resting, CD4+ T-cells and activated monocytes. Mouse and human IL-17F share 55% sequence identity. IL-17F has been shown to stimulate the production of several other cytokines, including IL-6, IL-8, and granulocyte colony-stimulating factor. IL-17F can regulate cartilage matrix turnover and stimulates PBMC and T-cell proliferation. IL-17F is also found to inhibit the angiogenesis of endothelial cells and induce endothelial cells to produce IL2, TGFB1/TGFB, and monocyte chemoattractant protein-1. Defects in IL-17F are the cause of familial candidiasis type 6 (CANDF6).

## For Research Use Only

A Reliable Research Partner in Life Science and Medicine

Toll-free: 1-888-852-8623

Web: [www.elabscience.com](http://www.elabscience.com)

Tel: 1-832-243-6086

Email: [techsupport@elabscience.com](mailto:techsupport@elabscience.com)

Fax: 1-832-243-6017