

## Recombinant Mouse IL-1A/IL-1 $\alpha$ Protein

Catalog No. PKSM041080

**Note:** Centrifuge before opening to ensure complete recovery of vial contents.

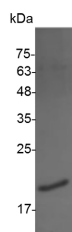
### Description

<b>Synonyms</b>	Interleukin-1 Alpha;IL-1 Alpha;Il1a
<b>Species</b>	Mouse
<b>Expression Host</b>	E.coli
<b>Sequence</b>	Ser115-Ser270
<b>Accession</b>	P01582
<b>Calculated Molecular Weight</b>	18.9 kDa
<b>Observed molecular weight</b>	20 kDa
<b>Tag</b>	C-His

### Properties

<b>Purity</b>	> 95 % as determined by reducing SDS-PAGE.
<b>Endotoxin</b>	< 0.1 EU per $\mu$ g of the protein as determined by the LAL method.
<b>Storage</b>	Generally, lyophilized proteins are stable for up to 12 months when stored at -20 to -80°C. Reconstituted protein solution can be stored at 4-8°C for 2-7 days. Aliquots of reconstituted samples are stable at < -20°C for 3 months.
<b>Shipping</b>	This product is provided as lyophilized powder which is shipped with ice packs.
<b>Formulation</b>	Lyophilized from sterile PBS, pH 7.4. Normally 5 % - 8 % trehalose, mannitol and 0.01% Tween80 are added as protectants before lyophilization. Please refer to the specific buffer information in the printed manual.
<b>Reconstitution</b>	Please refer to the printed manual for detailed information.

### Data



> 95 % as determined by reducing SDS-PAGE.

### Background

Mouse Interleukin-1 (IL-1) designates two proteins, IL-1 $\alpha$  and IL-1 $\beta$ , which are the products of distinct genes, but recognize the same cell surface receptors. IL-1 $\alpha$  and IL-1 $\beta$  are structurally related polypeptides that show approximately 25% homology at the amino acid level. Both proteins are produced by a wide variety of cells in response to stimuli such as

### For Research Use Only

those produced by inflammatory agents, infections, or microbial endotoxins. The proteins are synthesized as 31 kDa precursors that are subsequently cleaved into proteins with molecular weights of approximately 17.5 kDa.