

Recombinant Mouse Lithostathine-2/REG2 Protein (His Tag)



Catalog Number:PKSM041102

Note: Centrifuge before opening to ensure complete recovery of vial contents.

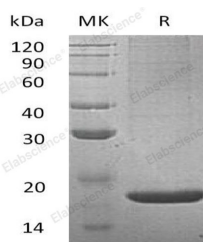
Description

Synonyms	Regenerating Islet-derived 2;Islet of Langerhans regenerating protein 2;Pancreatic stone protein 2;Pancreatic thread protein 2;PSP;PTP
Species	Mouse
Expression Host	HEK293 Cells
Sequence	Gln23-Ala173
Accession	Q08731
Calculated Molecular Weight	17.7 kDa
Observed molecular weight	18 kDa
Tag	N-His

Properties

Purity	> 95 % as determined by reducing SDS-PAGE.
Endotoxin	< 1.0 EU per µg of the protein as determined by the LAL method.
Storage	Generally, lyophilized proteins are stable for up to 12 months when stored at -20 to -80°C. Reconstituted protein solution can be stored at 4-8°C for 2-7 days. Aliquots of reconstituted samples are stable at < -20°C for 3 months.
Shipping	This product is provided as lyophilized powder which is shipped with ice packs.
Formulation	Lyophilized from a 0.2 µm filtered solution of PBS, pH 7.4. Normally 5 % - 8 % trehalose, mannitol and 0.01% Tween80 are added as protectants before lyophilization. Please refer to the specific buffer information in the printed manual.
Reconstitution	Please refer to the printed manual for detailed information.

Data



> 95 % as determined by reducing SDS-PAGE.

Background

Regenerating protein 2 (Reg2) also known as Lithostathine 2, pancreatic thread protein (PTP2) and pancreatic stone protein 2 (PSP2), is a member of the Reg family of proteins. These small, secreted proteins have been implicated in a range of physiological processes including acting as acute phase reactants, lectins, survival/growth factors for insulin-producing pancreatic beta-cells, neural cells, and epithelial cells of the digestive system. Studies also indicate a role for Reg family members in tumor formation and indicate their potential for use as biomarkers of carcinogenesis. Mouse Reg2 is expressed in regenerating islets and normal exocrine pancreas. Reg2 also stimulates the growth of pancreatic beta cells. Mouse Reg2 belongs to the type II subclass of the Reg family and is the only subclass II Reg protein described.

For Research Use Only

A Reliable Research Partner in Life Science and Medicine

Toll-free: 1-888-852-8623

Web: www.elabscience.com

Tel: 1-832-243-6086

Email: techsupport@elabscience.com

Fax: 1-832-243-6017