

Recombinant Mouse LDHA/LDH1 Protein (His Tag)

Catalog Number:PKSM041103



Note: Centrifuge before opening to ensure complete recovery of vial contents.

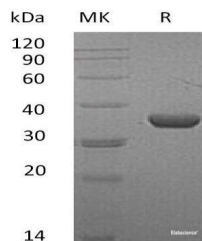
Description

Synonyms	LDHA;Ldh1;L-lactate dehydrogenase
Species	Mouse
Expression Host	HEK293 Cells
Sequence	Met1-Phe332
Accession	P06151
Calculated Molecular Weight	37.5 kDa
Observed molecular weight	37 kDa
Tag	C-His

Properties

Purity	> 95 % as determined by reducing SDS-PAGE.
Endotoxin	< 1.0 EU per µg of the protein as determined by the LAL method.
Storage	Store at < -20°C, stable for 6 months. Please minimize freeze-thaw cycles.
Shipping	This product is provided as liquid. It is shipped at frozen temperature with blue ice/gel packs. Upon receipt, store it immediately at < - 20°C.
Formulation	Supplied as a 0.2 µm filtered solution of 20mM Tris-HCl, 50%Glycerol, 500 mMNaCl, 5% Trehalose, 5% Mannitol, 0.01% Tween80, 1mM EDTA, pH9.0.
Reconstitution	Not Applicable

Data



> 95 % as determined by reducing SDS-PAGE.

Background

Mouse Lactate dehydrogenase A (LDHA) is a member of the LDH/MDH superfamily and LDH family. LDHA catalyzes the inter-conversion of pyruvate and L-lactate with concomitant inter-conversion of NADH and NAD⁺. LDHA is found in most somatic tissues, though predominantly in muscle tissue and tumours. It has also been shown that LDHA plays an important role in the development, invasion and metastasis of malignancies. Mutations in LDHA have been linked to exertional myoglobinuria.

For Research Use Only

A Reliable Research Partner in Life Science and Medicine

Toll-free: 1-888-852-8623

Web: www.elabscience.com

Tel: 1-832-243-6086

Email: techsupport@elabscience.com

Fax: 1-832-243-6017