

Recombinant Mouse MMP12/MMP-12/HME Protein (His Tag)



Catalog Number:PKSM041106

Note: Centrifuge before opening to ensure complete recovery of vial contents.

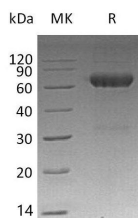
Description

Synonyms	Macrophage metalloelastase;MME;Matrix metalloproteinase-12;MMP-12;Mmp12;Mme;Mmel
Species	Mouse
Expression Host	HEK293 Cells
Sequence	Ala29-Cys473
Accession	P34960
Calculated Molecular Weight	53.0 kDa
Observed molecular weight	64 kDa
Tag	C-His

Properties

Purity	> 95 % as determined by reducing SDS-PAGE.
Endotoxin	< 1.0 EU per µg of the protein as determined by the LAL method.
Storage	Store at < -20°C, stable for 6 months. Please minimize freeze-thaw cycles.
Shipping	This product is provided as liquid. It is shipped at frozen temperature with blue ice/gel packs. Upon receipt, store it immediately at < - 20°C.
Formulation	Supplied as a 0.2 µm filtered solution of 20mM PB, 500mM NaCl,0.01%Tween80, 1mM EDTA, 50% Glycerol, pH6.0.
Reconstitution	Not Applicable

Data



> 95 % as determined by reducing SDS-PAGE.

Background

Matrix metalloproteinase-12 (MMP12) is a secreted protein. It contains 4 hemopexin repeats and belongs to the peptidase M10A family. MMP12 may be involved in tissue injury and remodeling and have significant elastolytic activity. It can accept large and small amino acids at the P1' site, but has a preference for leucine. Aromatic or hydrophobic residues are preferred at the P1 site, with small hydrophobic residues (preferably alanine) occupying P3.

For Research Use Only

A Reliable Research Partner in Life Science and Medicine

Toll-free: 1-888-852-8623

Web: www.elabscience.com

Tel: 1-832-243-6086

Email: techsupport@elabscience.com

Fax: 1-832-243-6017