

Recombinant Mouse MIF Protein (His Tag)

Catalog No. PKSM041107

Note: Centrifuge before opening to ensure complete recovery of vial contents.

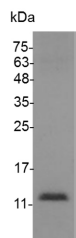
Description

Synonyms	Macrophage migration inhibitory factor;Delayed early response protein 6;DER6;Glycosylation-inhibiting factor;GIF;L-dopachrome isomerase;L-dopachrome tautomerase;Phenylpyruvate tautomerase;
Species	Mouse
Expression Host	E.coli
Sequence	Pro2-Ala115
Accession	P34884
Calculated Molecular Weight	13.3 kDa
Observed molecular weight	11-17 kDa
Tag	C-His
Bioactivity	Not validated for activity

Properties

Purity	> 98 % as determined by reducing SDS-PAGE.
Endotoxin	< 0.1 EU per µg of the protein as determined by the LAL method.
Storage	Generally, lyophilized proteins are stable for up to 12 months when stored at -20 to -80°C. Reconstituted protein solution can be stored at 4-8°C for 2-7 days. Aliquots of reconstituted samples are stable at < -20°C for 3 months.
Shipping	This product is provided as lyophilized powder which is shipped with ice packs.
Formulation	Lyophilized from sterile PBS, pH 7.4. Normally 5 % - 8 % trehalose, mannitol and 0.01% Tween80 are added as protectants before lyophilization. Please refer to the specific buffer information in the printed manual.
Reconstitution	Please refer to the printed manual for detailed information.

Data



> 98 % as determined by reducing SDS-PAGE.

Background

For Research Use Only

Macrophage migration inhibitory factor(MIF) is a secreted protein and belongs to the MIF family. MIF is an important regulator of innate immunity. The circulating MIF binds to CD74 on other immune cells to trigger an acute immune response. Hence MIF is classified as an inflammatory cytokine. Furthermore glucocorticoids also stimulate white blood cells to release MIF and hence MIF partially counter acts the inhibitory effects that glucocorticoids have on the immune system. Finally trauma activates the anterior pituitary gland to release MIF.