

Recombinant Mouse CPQ/PGCP Protein (His Tag)

Catalog Number:PKSM041123



Note: Centrifuge before opening to ensure complete recovery of vial contents.

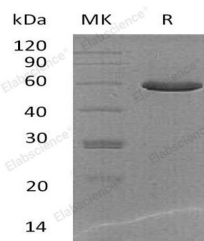
Description

Synonyms	PGCP;Carboxypeptidase Q;Hematopoietic lineage switch 2;Plasma glutamate carboxypeptidase;Cpq;Hls2
Species	Mouse
Expression Host	HEK293 Cells
Sequence	Lys19-Ser470
Accession	Q9WVJ3
Calculated Molecular Weight	50.8 kDa
Observed molecular weight	60 kDa
Tag	C-His

Properties

Purity	> 95 % as determined by reducing SDS-PAGE.
Endotoxin	< 1.0 EU per µg of the protein as determined by the LAL method.
Storage	Store at < -20°C, stable for 6 months. Please minimize freeze-thaw cycles.
Shipping	This product is provided as liquid. It is shipped at frozen temperature with blue ice/gel packs. Upon receipt, store it immediately at < - 20°C.
Formulation	Supplied as a 0.2 µm filtered solution of 20mM PB, 150mM NaCl, pH 7.4.
Reconstitution	Not Applicable

Data



> 95 % as determined by reducing SDS-PAGE.

Background

Carboxypeptidase Q (Cpq) is a member of the peptidase M28 family. PGCP is involved in a number of fundamental biological processes such as the hydrolysis of circulating peptides, catalyzing the hydrolysis of dipeptides with unsubstituted terminals into amino acids. Carboxypeptidase may play an important role in the liberation of thyroxine hormone from its thyroglobulin (Tg) precursor. The monomeric form is inactive while the homodimer is active.

For Research Use Only

A Reliable Research Partner in Life Science and Medicine

Toll-free: 1-888-852-8623

Web: www.elabscience.com

Tel: 1-832-243-6086

Email: techsupport@elabscience.com

Fax: 1-832-243-6017