

Recombinant Mouse SerpinF2/SERPINF2 protein (His tag)



Catalog Number:PKSM041141

Note: Centrifuge before opening to ensure complete recovery of vial contents.

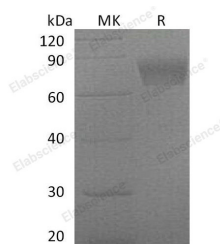
Description

| | |
|------------------------------------|---|
| Synonyms | Alpha-2-antiplasmin, Alpha-2-AP, Alpha-2-plasmin inhibitor, Alpha-2-PI, Serpin F2, Serpinf2 |
| Species | Mouse |
| Expression Host | HEK293 Cells |
| Sequence | Met1-Lys491 |
| Accession | Q61247 |
| Calculated Molecular Weight | 53.2 kDa |
| Observed molecular weight | 70 kDa |
| Tag | C-His |
| Bioactivity | Testing in progress |

Properties

| | |
|-----------------------|---|
| Purity | > 95 % as determined by reducing SDS-PAGE. |
| Endotoxin | Please contact us for more information. |
| Storage | Generally, lyophilized proteins are stable for up to 12 months when stored at -20 to -80°C. Reconstituted protein solution can be stored at 4-8°C for 2-7 days. Aliquots of reconstituted samples are stable at < -20°C for 3 months. |
| Shipping | This product is provided as lyophilized powder which is shipped with ice packs. |
| Formulation | Lyophilized from sterile PBS, pH 7.4. Normally 5 % - 8 % trehalose, mannitol and 0.01% Tween80 are added as protectants before lyophilization. Please refer to the specific buffer information in the printed manual. |
| Reconstitution | Please refer to the printed manual for detailed information. |

Data



> 95 % as determined by reducing SDS-PAGE.

Background

SerpinF2, also known as alpha-2 antiplasmin (alpha-2 AP), is a member of the Serpin superfamily. SerpinF2 is the principal physiological inhibitor of serine protease plasmin, and as well as, an efficient inhibitor of trypsin and chymotrypsin. This protease is produced mainly by liver and kidney, and also expressed in muscle, intestine, central nervous system, and placenta also express this protein at a moderate level. It is indicated that Serpin F2 is a key regulator of plasmin-mediated proteolysis in these tissues. Alpha-2 AP is an unusual serpin in that it contains extensive N- and C-terminal sequences flanking the serpin domain. The N-terminal sequence is crosslinked to fibrin by factor XIIIa, whereas

For Research Use Only

A Reliable Research Partner in Life Science and Medicine

Toll-free: 1-888-852-8623

Web: www.elabscience.com

Tel: 1-832-243-6086

Email: techsupport@elabscience.com

Fax: 1-832-243-6017

Recombinant Mouse SerpinF2/SERPINF2 protein (His tag)

Catalog Number:PKSM041141

DIA • AN®
by Elabscience

the C-terminal region mediates the initial interaction with plasmin. SerpinF2 is one of the inhibitors of fibrinolysis, which acts as the primary inhibitor of plasmin(ogen). It is a specific plasmin inhibitor, and is important in modulating the effectiveness and persistence of fibrin with respect to its susceptibility to digestion and removal by plasmin. Alpha-2 AP plays the dominant role in inhibiting both plasma clot lysis and thrombus lysis, and accordingly, the congenital deficiency of Alpha-2 antiplasmin causes a rare bleeding disorder because of increased fibrinolysis. Thus, it may be a useful target for developing more effective treatment of thrombotic diseases.

For Research Use Only

A Reliable Research Partner in Life Science and Medicine

Toll-free: 1-888-852-8623

Tel: 1-832-243-6086

Fax: 1-832-243-6017

Web: www.elabscience.com

Email: techsupport@elabscience.com