

# Recombinant Mouse SerpinF2/SERPINF2 Protein (Fc Tag)



Catalog Number:PKSM041142

**Note:** Centrifuge before opening to ensure complete recovery of vial contents.

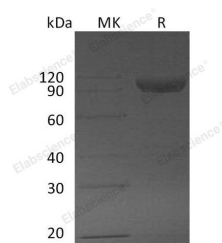
## Description

<b>Synonyms</b>	Alpha-2-antiplasmin;Alpha-2-AP;Alpha-2-plasmin inhibitor;Alpha-2-PI;Serpin F2;Serpinf2
<b>Species</b>	Mouse
<b>Expression Host</b>	HEK293 Cells
<b>Sequence</b>	Val28-Lys491
<b>Accession</b>	Q61247
<b>Calculated Molecular Weight</b>	79.3 kDa
<b>Observed molecular weight</b>	90-120 kDa
<b>Tag</b>	C-Fc

## Properties

<b>Purity</b>	> 95 % as determined by reducing SDS-PAGE.
<b>Endotoxin</b>	< 1.0 EU per µg of the protein as determined by the LAL method.
<b>Storage</b>	Store at < -20°C, stable for 6 months. Please minimize freeze-thaw cycles.
<b>Shipping</b>	This product is provided as liquid. It is shipped at frozen temperature with blue ice/gel packs. Upon receipt, store it immediately at < - 20°C.
<b>Formulation</b>	Supplied as a 0.2 µm filtered solution of 20mM Tris-HCl, 150mM NaCl, 20% Glycerol, pH 8.0.
<b>Reconstitution</b>	Not Applicable

## Data



> 95 % as determined by reducing SDS-PAGE.

## Background

Alpha-2-antiplasmin, also called Serpin F2, is a serine protease inhibitor (serpin) responsible for inactivating plasmin, and an important enzyme participates in fibrinolysis and degradation of other proteins. In liver cirrhosis, there is decreased production of alpha 2-antiplasmin, leading to decreased inactivation of plasmin and an increase in fibrinolysis. Serpin F2 is major expressed on liver and kidney. Some other tissues such as muscle, intestine, central nervous system, and placenta also express Serpin F2 mRNA at a moderate level indicated that it is a key regulator of plasmin-mediated proteolysis in these tissues.

## For Research Use Only

A Reliable Research Partner in Life Science and Medicine

Toll-free: 1-888-852-8623

Web: [www.elabscience.com](http://www.elabscience.com)

Tel: 1-832-243-6086

Email: [techsupport@elabscience.com](mailto:techsupport@elabscience.com)

Fax: 1-832-243-6017