

Recombinant Mouse SLAMF8 Protein (His Tag)

Catalog Number:PKSM041147



Note: Centrifuge before opening to ensure complete recovery of vial contents.

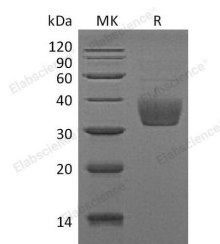
Description

Synonyms	SLAM family member 8;B-lymphocyte activator macrophage expressed;CD353;Slamf8;Blame;SBB142
Species	Mouse
Expression Host	HEK293 Cells
Sequence	Val21-Asp231
Accession	Q9D3G2
Calculated Molecular Weight	24.2 kDa
Observed molecular weight	32-38 kDa
Tag	C-His

Properties

Purity	> 90 % as determined by reducing SDS-PAGE.
Endotoxin	< 1.0 EU per µg of the protein as determined by the LAL method.
Storage	Generally, lyophilized proteins are stable for up to 12 months when stored at -20 to -80°C. Reconstituted protein solution can be stored at 4-8°C for 2-7 days. Aliquots of reconstituted samples are stable at < -20°C for 3 months.
Shipping	This product is provided as lyophilized powder which is shipped with ice packs.
Formulation	Lyophilized from a 0.2 µm filtered solution of 20mM PB, 150mM NaCl, pH 7.4. Normally 5 % - 8 % trehalose, mannitol and 0.01% Tween80 are added as protectants before lyophilization. Please refer to the specific buffer information in the printed man
Reconstitution	Please refer to the printed manual for detailed information.

Data



> 90 % as determined by reducing SDS-PAGE.

Background

Mouse SLAM family member 8/SLAMF8 is a single-pass type I membrane protein. It contains one Ig-likeC2-type domain. SLAMF8 is expressed in lymphnode, spleen, thymus and bone marrow. The signaling lymphocyte activation molecule (SLAM) family includes homophilic and heterophilic receptors that modulate both adaptive and innate immune responses. These receptors share a common ectodomain organization: a membrane-proximal immunoglobulin constant domain and a membrane-distal immunoglobulin variable domain that is responsible for ligand recognition. SLAM family of receptors is expressed by a wide range of immune cells. Through their cytoplasmic domain, SLAM family receptors associate with SLAM-associated protein (SAP)-related molecules, a group of cytoplasmic adaptors composed almost

For Research Use Only

A Reliable Research Partner in Life Science and Medicine

Toll-free: 1-888-852-8623

Web: www.elabscience.com

Tel: 1-832-243-6086

Email: techsupport@elabscience.com

Fax: 1-832-243-6017

Recombinant Mouse SLAMF8 Protein (His Tag)

Catalog Number:PKSM041147



exclusively of an SRC homology 2 domain. SLAM family receptors, in association with SAP family adaptors, have crucial roles during normal immune reactions in innate and adaptive immune cells. It may play a role in B-lineage commitment and/or modulation of signaling through the B-cell receptor.

For Research Use Only

A Reliable Research Partner in Life Science and Medicine

Toll-free: 1-888-852-8623

Tel: 1-832-243-6086

Fax: 1-832-243-6017

Web: www.elabscience.com

Email: techsupport@elabscience.com