

## Recombinant Mouse TREM1 Protein (His Tag)

Catalog No. PKSM041172

**Note:** Centrifuge before opening to ensure complete recovery of vial contents.

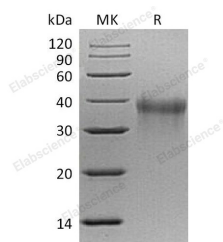
### Description

<b>Synonyms</b>	Triggering receptor expressed on myeloid cells 1; TREM-1; CD354; Trem1
<b>Species</b>	Mouse
<b>Expression Host</b>	HEK293 Cells
<b>Sequence</b>	Ala21-Ser202
<b>Accession</b>	Q9JKE2
<b>Calculated Molecular Weight</b>	20.9 kDa
<b>Observed molecular weight</b>	38 kDa
<b>Tag</b>	C-His
<b>Bioactivity</b>	Not validated for activity

### Properties

<b>Purity</b>	> 95 % as determined by reducing SDS-PAGE.
<b>Endotoxin</b>	< 1.0 EU per µg of the protein as determined by the LAL method.
<b>Storage</b>	Generally, lyophilized proteins are stable for up to 12 months when stored at -20 to -80°C. Reconstituted protein solution can be stored at 4-8°C for 2-7 days. Aliquots of reconstituted samples are stable at < -20°C for 3 months.
<b>Shipping</b>	This product is provided as lyophilized powder which is shipped with ice packs.
<b>Formulation</b>	Lyophilized from a 0.2 µm filtered solution of PBS, pH 7.4. Normally 5 % - 8 % trehalose, mannitol and 0.01% Tween80 are added as protectants before lyophilization. Please refer to the specific buffer information in the printed manual.
<b>Reconstitution</b>	Please refer to the printed manual for detailed information.

### Data



> 95 % as determined by reducing SDS-PAGE.

### Background

Triggering Receptor Expressed on Myeloid Cells 1 (TREM-1) is a transmembrane protein with a single Ig-like domain. TREM-1 associates with the adapter protein, DAP12, to deliver an activating signal. TREM-1 is expressed on blood

### For Research Use Only

neutrophils and monocytes, and the expression is up-regulated by bacterial LPS. TREM-1 is expressed at high levels on neutrophils of patients with microbial sepsis and in mice with a TREM-1/Fc fusion protein protected mice against LPS-induced shock. It stimulates neutrophil and monocyte-mediated inflammatory responses. Triggers release of pro-inflammatory chemokines and cytokines, as well as increased surface expression of cell activation markers. TREM-1 is amplifier of inflammatory responses that are triggered by bacterial and fungal infections and are a crucial mediator of septic shock.