

# Recombinant Mouse Serpina A1a Protein (His Tag)

Catalog Number:PKSM041184



**Note:** Centrifuge before opening to ensure complete recovery of vial contents.

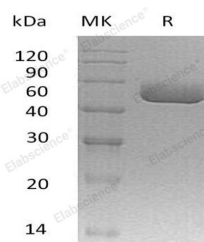
## Description

<b>Synonyms</b>	Alpha-1-antitrypsin 1-1;Alpha-1 protease inhibitor 1;Alpha-1-antiproteinase;Serine protease inhibitor 1-1;Serine protease inhibitor A1a;Serpina A1a;AAT.
<b>Species</b>	Mouse
<b>Expression Host</b>	HEK293 Cells
<b>Sequence</b>	Glu25-Lys413
<b>Accession</b>	AAC28869.1
<b>Calculated Molecular Weight</b>	44.5 kDa
<b>Observed molecular weight</b>	45-60 kDa
<b>Tag</b>	C-His

## Properties

<b>Purity</b>	> 95 % as determined by reducing SDS-PAGE.
<b>Endotoxin</b>	< 1.0 EU per µg of the protein as determined by the LAL method.
<b>Storage</b>	Generally, lyophilized proteins are stable for up to 12 months when stored at -20 to -80°C. Reconstituted protein solution can be stored at 4-8°C for 2-7 days. Aliquots of reconstituted samples are stable at < -20°C for 3 months.
<b>Shipping</b>	This product is provided as lyophilized powder which is shipped with ice packs.
<b>Formulation</b>	Lyophilized from a 0.2 µm filtered solution of PBS, pH 7.4. Normally 5 % - 8 % trehalose, mannitol and 0.01% Tween80 are added as protectants before lyophilization. Please refer to the specific buffer information in the printed manual.
<b>Reconstitution</b>	Please refer to the printed manual for detailed information.

## Data



> 95 % as determined by reducing SDS-PAGE.

## Background

Serpina A1a is also known as alpha-1-antitrypsin, is a member of the serpin superfamily of serine proteinase inhibitors that are involved in the regulation of a number of proteolytic processes. Its primary target is elastase, but it also has a moderate affinity for plasmin and thrombin.

## For Research Use Only

A Reliable Research Partner in Life Science and Medicine

Toll-free: 1-888-852-8623

Web: [www.elabscience.com](http://www.elabscience.com)

Tel: 1-832-243-6086

Email: [techsupport@elabscience.com](mailto:techsupport@elabscience.com)

Fax: 1-832-243-6017