

S100A8 Polyclonal Antibody

Catalog No. E-AB-40290

Note: Centrifuge before opening to ensure complete recovery of vial contents.

Description

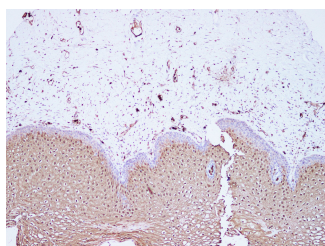
Reactivity	Human
Immunogen	Recombinant Human Protein S100-A8 protein
Host	Rabbit
Isotype	IgG
Purification	Affinity Purification
Conjugation	Unconjugated
Buffer	PBS with 0.02% sodium azide, 1% protective protein and 50% glycerol, pH7.4

Applications

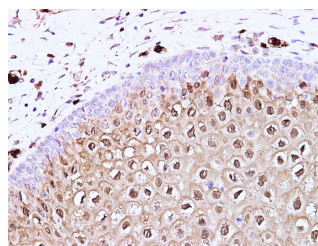
Recommended Dilution

IHC 1:100-1:200

Data



Immunohistochemistry of paraffin-embedded Human cervix using S100A8 Polyclonal Antibody at dilution of 1:100 (100×)



Immunohistochemistry of paraffin-embedded Human cervix using S100A8 Polyclonal Antibody at dilution of 1:100 (400×)

Preparation & Storage

Storage Store at -20°C. Avoid freeze / thaw cycles.

Background

The protein encoded by this gene is a member of the S100 family of proteins containing 2 EF-hand calcium-binding motifs. S100 proteins are localized in the cytoplasm and/or nucleus of a wide range of cells, and involved in the regulation of a number of cellular processes such as cell cycle progression and differentiation. S100 genes include at least 13 members which are located as a cluster on chromosome 1q21. This protein may function in the inhibition of casein kinase and as a cytokine. Altered expression of this protein is associated with the disease cystic fibrosis. Multiple transcript variants encoding different isoforms have been found for this gene.

For Research Use Only