

CK-18 Polyclonal Antibody

Catalog No. E-AB-40291

Note: Centrifuge before opening to ensure complete recovery of vial contents.

Description

Reactivity	Human, Mouse, Rat
Immunogen	Recombinant Human Keratin, type I cytoskeletal 18 protein
Host	Rabbit
Isotype	IgG
Purification	Antigen Affinity Purification
Conjugation	Unconjugated
Buffer	PBS with 0.05% Proclin300 and 50% glycerol, pH7.4.

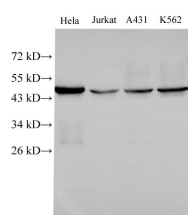
Applications Recommended Dilution

WB 1:500-1:1000 IHC

1:100-1:300 IF

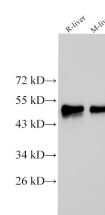
1:100-1:200

Data

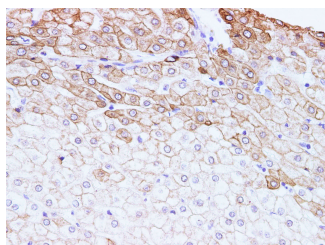


Western Blot analysis of HeLa, Jurkat, A431 and k562 cells using CK-18 Polyclonal Antibody at dilution of 1:500

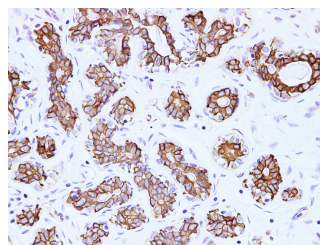
Observed Mw:48 kDa
Calculated Mw:48 kDa



Western Blot analysis of Rat liver and Mouse liver using CK-18 Polyclonal Antibody at dilution of 1:500

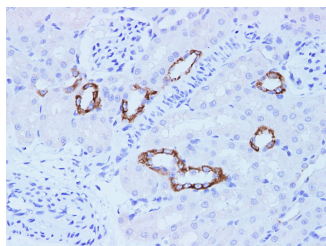


Immunohistochemistry of paraffin-embedded Human liver using CK-18 Polyclonal Antibody at dilution of 1:100

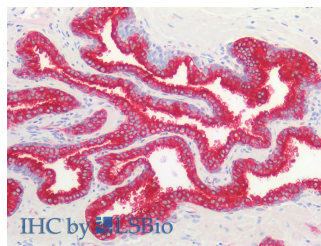


Immunohistochemistry of paraffin-embedded Human breast using CK-18 Polyclonal Antibody at dilution of 1:100

For Research Use Only



Immunohistochemistry of paraffin-embedded Rat kidney using CK-18 Polyclonal Antibody at dilution of 1:100



Immunohistochemistry of paraffin-embedded Human prostate using CK-18 Polyclonal Antibody at dilution of 1:100 (Elabscience® Product Detected by Lifespan).

Preparation & Storage

Storage Store at -20°C. Avoid freeze / thaw cycles.

Background

Cytokeratin 18 (CK18) has a molecular weight of 45 KDa, which is a low molecular weight type A cytokeratin. It is a marker of simple epithelium, including glandular epithelium. The stratified squamous epithelium is generally negative. CK18 is mainly used in the diagnosis of adenocarcinoma.