

CK-7 Polyclonal Antibody

Catalog No. E-AB-40292

Note: Centrifuge before opening to ensure complete recovery of vial contents.

Description

Reactivity	Human,Mouse,Rat
Immunogen	Recombinant Mouse Keratin, type II cytoskeletal 7 protein
Host	Rabbit
Isotype	IgG
Purification	Antigen Affinity Purification
Conjugation	Unconjugated
Buffer	PBS with 0.05% Proclin300 and 50% glycerol, pH7.4.

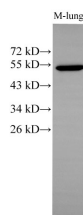
Applications

Recommended Dilution

WB 1:500-1:2000 IHC

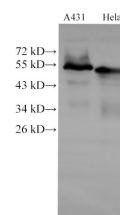
1:100-1:200

Data

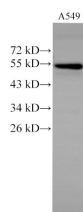


Western Blot analysis of Mouse lung using CK-7 Polyclonal Antibody at dilution of 1:500

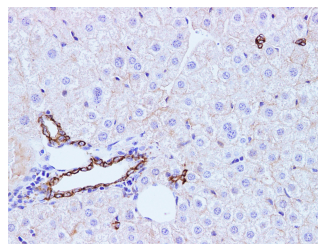
Observed Mw:51 kDa
Calculated Mw:51 kDa



Western Blot analysis of A431 and HeLa cells using CK-7 Polyclonal Antibody at dilution of 1:2000

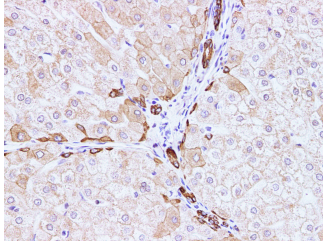


Western Blot analysis of A549 cells using CK-7 Polyclonal Antibody at dilution of 1:2000

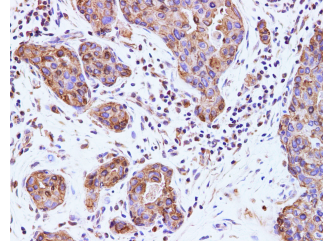


Immunohistochemistry of paraffin-embedded Rat liver using CK-7 Polyclonal Antibody at dilution of 1:100

For Research Use Only



Immunohistochemistry of paraffin-embedded Human liver using CK-7 Polyclonal Antibody at dilution of 1:100



Immunohistochemistry of paraffin-embedded Human breast cancer using CK-7 Polyclonal Antibody at dilution of 1:100

Preparation & Storage

Storage Store at -20°C. Avoid freeze / thaw cycles.

Background

Keratins are a large family of proteins that form the intermediate filament cytoskeleton of epithelial cells, which are classified into two major sequence types. Type I keratins are a group of acidic intermediate filament proteins, including K9–K23, and the hair keratins Ha1–Ha8. Type II keratins are the basic or neutral counterparts to the acidic type I keratins, including K1–K8, and the hair keratins, Hb1–Hb6. KRT7, also named as cytokeratin 7, is one member of type II basic cytokeratin. It is specifically expressed in the simple epithelia lining the cavities of the internal organs and in the gland ducts and blood vessels, and their neoplasms. KRT7 is marker of epithelial tissues, but not present in carcinomas of stratified squamous cell origin. This antibody is specifically against KRT7.

For Research Use Only