

Note: Centrifuge before opening to ensure complete recovery of vial contents.

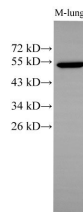
Description

Reactivity	Human, Mouse, Rat
Immunogen	Recombinant Mouse Keratin, type II cytoskeletal 7 protein
Host	Rabbit
Isotype	IgG
Purification	Antigen Affinity Purification
Conjugation	Unconjugated
Formulation	PBS with 0.05% Proclin300 and 50% glycerol, pH7.4.

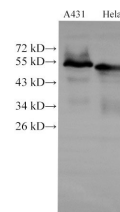
Applications Recommended Dilution

WB 1:500-1:2000 IHC
1:100-1:200

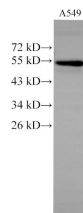
Data



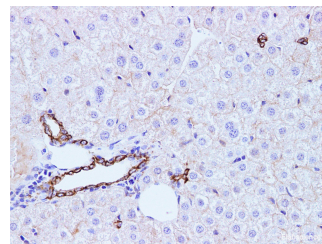
Western Blot analysis of Mouse lung using CK-7 Polyclonal Antibody at dilution of 1:500
Observed Mw:51 kDa
Calculated Mw:51 kDa



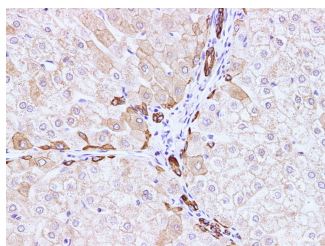
Western Blot analysis of A431 and HeLa cells using CK-7 Polyclonal Antibody at dilution of 1:2000



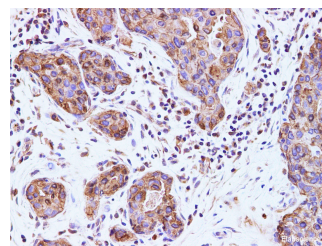
Western Blot analysis of A549 cells using CK-7 Polyclonal Antibody at dilution of 1:2000



Immunohistochemistry of paraffin-embedded Rat liver using CK-7 Polyclonal Antibody at dilution of 1:100



Immunohistochemistry of paraffin-embedded



Immunohistochemistry of paraffin-embedded

For Research Use Only

A Reliable Research Partner in Life Science and Medicine

Toll-free: 1-888-852-8623

Tel: 1-832-243-6086

Fax: 1-832-243-6017

Web: www.elabscience.com

Email: techsupport@elabscience.com

CK-7 Polyclonal Antibody

Catalog Number:E-AB-40292

1 Publications



Human liver using CK-7 Polyclonal Antibody at dilution of 1:100

Human breast cancer using CK-7 Polyclonal Antibody at dilution of 1:100

Preparation & Storage

Storage Store at -20°C. Avoid freeze / thaw cycles.

Background

Keratins are a large family of proteins that form the intermediate filament cytoskeleton of epithelial cells, which are classified into two major sequence types. Type I keratins are a group of acidic intermediate filament proteins, including K9–K23, and the hair keratins Ha1–Ha8. Type II keratins are the basic or neutral counterparts to the acidic type I keratins, including K1–K8, and the hair keratins, Hb1–Hb6. KRT7, also named as cytokeratin 7, is one member of type II basic cytokeratin. It is specifically expressed in the simple epithelia lining the cavities of the internal organs and in the gland ducts and blood vessels, and their neoplasms. KRT7 is marker of epithelial tissues, but not present in carcinomas of stratified squamous cell origin. This antibody is specifically against KRT7.

For Research Use Only

A Reliable Research Partner in Life Science and Medicine

Toll-free: 1-888-852-8623

Tel: 1-832-243-6086

Fax: 1-832-243-6017

Web: www.elabscience.com

Email: techsupport@elabscience.com