

KLK10 Polyclonal Antibody

Catalog No. E-AB-40295

Note: Centrifuge before opening to ensure complete recovery of vial contents.

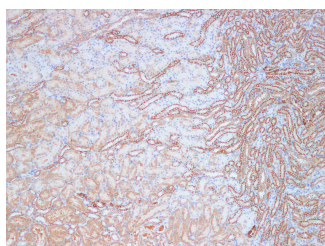
Description

Reactivity	Mouse,Rat
Immunogen	Recombinant Rat Glandular kallikrein-10 protein
Host	Rabbit
Isotype	IgG
Purification	Antigen Affinity Purification
Conjugation	Unconjugated
Buffer	PBS with 0.02% sodium azide,1% protective protein and 50% glycerol,pH7.4

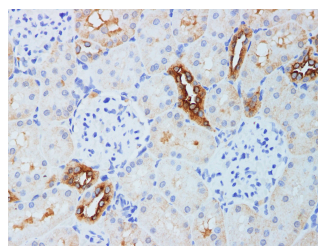
Applications Recommended Dilution

IHC 1:100-1:300

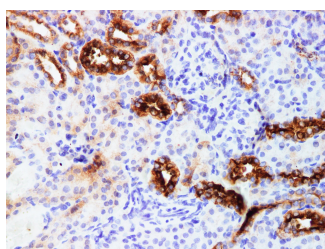
Data



Immunohistochemistry of paraffin-embedded Rat kidney using KLK10 Polyclonal Antibody at dilution of 1:200(1×100)



Immunohistochemistry of paraffin-embedded Rat kidney using KLK10 Polyclonal Antibody at dilution of 1:200(1×400)



Immunohistochemistry of paraffin-embedded Mouse kidney using KLK10 Polyclonal Antibody at dilution of 1:200

Preparation & Storage

Storage Store at -20°C. Avoid freeze / thaw cycles.

Background

Kallikreins are a subgroup of serine proteases having diverse physiological functions. Growing evidence suggests that

For Research Use Only

many kallikreins are implicated in carcinogenesis and some have potential as novel cancer and other disease biomarkers. This gene is one of the fifteen kallikrein subfamily members located in a cluster on chromosome 19. Its encoded protein is secreted and may play a role in suppression of tumorigenesis in breast and prostate cancers. Alternate splicing of this gene results in multiple transcript variants encoding the same protein.