

BSG Polyclonal Antibody

Catalog No. E-AB-40298

Note: Centrifuge before opening to ensure complete recovery of vial contents.

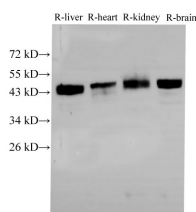
Description

Reactivity	Mouse,Rat
Immunogen	Recombinant Rat Basigin protein
Host	Rabbit
Isotype	IgG
Purification	Antigen Affinity Purification
Conjugation	Unconjugated
Buffer	PBS with 0.02% sodium azide,1% protective protein and 50% glycerol,pH7.4

Applications Recommended Dilution

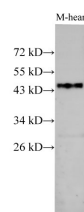
WB	1:1000-1:2000
IHC	1:100-1:300

Data

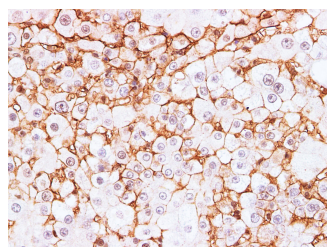


Western Blot analysis of Rat liver, Rat heart, Rat kidney and Rat brain using BSG Polyclonal Antibody at dilution of 1:2000

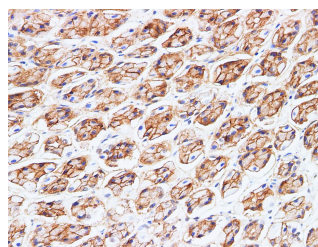
Observed Mw:30kDa,40-60kDa
Calculated Mw:30kDa,40-60kDa



Western Blot analysis of Mouse heart using BSG Polyclonal Antibody at dilution of 1:1000



Immunohistochemistry of paraffin-embedded Rat liver using BSG Polyclonal Antibody at dilution of 1:200



Immunohistochemistry of paraffin-embedded Rat stomach using BSG Polyclonal Antibody at dilution of 1:200

Preparation & Storage

For Research Use Only

Storage Store at -20°C. Avoid freeze / thaw cycles.

Background

BSG, also named as 5F7, Basigin, EMMPRIN, TCSF and CD147, plays pivotal roles in spermatogenesis, embryo implantation, neural network formation and tumor progression. It stimulates adjacent fibroblasts to produce matrix metalloproteinases (MMPs). CD147 may target monocarboxylate transporters SLC16A1, SLC16A3 and SLC16A8 to plasma membranes of retinal pigment epithelium and neural retina. It seems to be a receptor for oligomannosidic glycans. CD147 is a receptor of CypA, inducing matrix metalloproteinase expression and mediating the degradation of the extracellular matrix, plays an important role in tumorigenesis and invasion in oral cancer. It has been considered as an objective and effective marker to predict invasion and prognosis in various cancers.

For Research Use Only